



Seton-La Salle
Catholic High School
1000 McNeilly Road
Pittsburgh, PA 15226
www.slshs.org

THE REPORT ON ANNUAL GIVING EDITION OF **The SLS Review**

For alumni/ae and friends of Elizabeth Seton, South Hills Catholic
and Seton-La Salle Catholic High Schools

VOLUME 1, NO 9

FALL 2007

In this edition

Principal's Message

Page 2



The Benefits of Coed

28 years after merging, we revisit
coeducation at SLS.

Page 3



Green & Gold Gala

The 13th Annual Dinner Auction
is SLS' premier celebration to
support student learning.

Saturday, November 10, 2007

Hilton Garden Inn at Southpointe

Page 12



Comedy Night at SLS

Friday, April 18, 2008

Laugh with alum Buzz Nutley and
Shaun Blackham in the

SLS Auditorium

Page 6



SLS Rebel Golf Outing

May 12, 2008

Edgewood Country Club

Page 4



Annual Giving Report

Page 13



Giving a gift takes many forms



Golfers at the annual Rebel Golf Classic raised \$20,000 for the Tuition Assistance Fund. (l to r) Carmen Talarico, Ben Woods '80, Mike Christ, Ross Maola '80, Greg Gattuso '80, Jim Sweeney '80, and Scott Seibert.

assistance to upper-classmen and a recently established faculty development fund supports enrichment programs for our teachers. There

In this, the annual report edition of the SLS Review, a list of donors to the Annual Fund is included. The Fund is the foundation of philanthropic giving at Seton-La Salle. Alumni and friends support the daily lives of students and teachers through academic, artistic and co-curricular programs by giving to the Annual Fund. The Fund is also the basis for our Tuition Assistance program, a critical component of our school's financial well being.

During the year, we receive notes and questions about giving to the Annual Fund and other programs. Following are answers to some of those questions.

May I give a gift to the school for something *other* than the Annual Fund?

Yes. When you make a gift to SLS, you can specify the need you wish to fill. In addition to the Annual Fund, the school has a fund for technology and educational tools, and a fund to support upkeep of the athletic field and sports facilities. The James Palmer Fund is a scholarship that provides emergency

are several privately funded scholarships as well (See pg 5). In addition, donors give gifts toward various renovations, to provide books for the library, and to support sports, clubs and activities. Gifts can be given on an annual or one-time basis. If you would like to make a gift and have questions or concerns, call Marilyn at 412-561-3583 x 119. In any given year, gifts to the school in the form of scholarships, repairs, donations for clubs, sports, and events easily exceed \$250,000.

When I attend the Annual Dinner Auction, what do I support?

Since its inception, the annual dinner auction has raised more than \$900,000 to support learning needs and classroom technology. Seton-La Salle's T-1 internet service line, computer labs,



Multimedia tools for students have been purchased with dinner auction proceeds.

Calendar of Events

SEPTEMBER

- 3 No School; Labor Day
- 8 Freshman Mixer
- 11 Parent Back to School Night, 7 pm
- 14 Football Senior Recognition Night
- 28 8th Grade Visitation - No school
- 29 Soccer Senior Recognition

OCTOBER

- 1 Spirit Week Begins
- 5 Homecoming Game
- 6 Homecoming Dance
ESHS 1957 50 yr reunion (pg. 4)
- 20 SHC 1977 30 yr reunion (pg. 4)
- 21 Open House
- 26 Middle School Faith Rally - No School

NOVEMBER

- 9 Parent/Teacher Conferences 6-9 pm
- 10 Annual Dinner Auction (pg. 12)
- 16-17 Fall Drama (also 11/17)
- 21 Thanksgiving vacation begins
(early dismissal)
- 23 SLS 1987 20 yr reunion (pg. 4)
- 24 SLS 1997 10 yr reunion (pg. 4)
- 30 Activities Drive Drawing

DECEMBER

- 8 Placement Test
- 21 Christmas vacation begins
(early dismissal)

JANUARY

- 3 School Resumes
- 21 Martin Luther King Day - No School
- 22 March for Life
- 30 SLS Variety Show

FEBRUARY

- 19 President's Day - No School

Sports schedules are posted on our website at www.slshs.org/athletics.

The SLS Review is published in the spring and fall by the Office of Development Seton-La Salle Catholic High School
1000 McNeilly Road
Pittsburgh, PA 15226-2513
www.slshs.org
Principal
Sister Patricia Laffey
Editor/Development Director
Marilyn Walsh
Contributing Writer/Editor
Margaret Myron
Photography
SLS students, Marilyn Walsh
Seton-La Salle Catholic High School is operated by the Catholic Diocese of Pittsburgh

From the principal

Just as the dust settles from the end of one school year, another year starts. The energy emanating from the students, faculty and others as they reenter the school is a wonderful phenomenon. This year especially, there is a feeling of newness. Not only do we have new students, new teachers and new programs, we also have a new corporate structure. Please look through this newsletter and read about some of these changes.

As we move ahead, I would like to take a moment to thank the past Advisory Board members. They have been our most stalwart volunteers and helped guide us as we pursued our goals—from renovations to enrollment building.

I would also like to thank all the donors listed in this issue of the SLS Review. I feel strongly that Catholic schools are not private schools, limited to those who can afford high tuition. Your support enables us to reach out to more families. Through your involvement students are given the opportunity to grow and develop in a Catholic environment where they can freely learn and discuss Christ's teachings. Please continue to support our mission—financially if possible, as a volunteer if you are in the vicinity, and always through prayer.



Sister Patricia Laffey, SC
Principal

Sister Patricia Laffey

From the 2006-07 Advisory Board Chair



Joseph L. Luvara, Esq. ('66)
Former Advisory
Board Chair

On behalf of the Advisory Board of Seton-La Salle Catholic High School, I wish to express my sincere gratitude to all of you who have contributed so generously to all of the causes that support Seton-La Salle, most especially for the gifts you have provided to the Annual Fund. Your generosity and sacrifice have contributed in a major way to Seton-La Salle's success.

Recently, the Diocese of Pittsburgh reorganized all of their Catholic high schools and incorporated them as separate and individual 501(c)(3) non-profit corporations. We have been incorporated as Seton-La Salle High School, Inc. A new set of by-laws has been promulgated which calls for the establishment of a true board of directors. That process is now taking place. Additionally, there are plans to maintain a separate advisory board with various committees that will continue to do their work in support of Seton-La Salle.

We believe that these are exciting and beneficial changes and will enable the Board of Directors and the Advisory Board to achieve their goals more expeditiously. Please feel free to visit the school; attend a game, a play, or other SLS event; write us a note letting us know what's new in your life, and be sure to visit the school website. We look forward to your continued support.

Joseph L. Luvara

Gifts take many forms

(continued from pg 1)

software updates, Smartboards, digital music and photography equipment, and other classroom tools have all been purchased with auction proceeds. If you haven't visited SLS in a while, you would be impressed by the state-of-the-art learning tools. You will also be impressed when you attend the auction. Guests shop amid 400 silent auction items—just in time for Christmas. Join us this year on November 10. (See pg. 12.)

Last year, my company purchased a Tee Sign for the Rebel Golf Classic. Where did that donation go?

The Rebel Golf Classic supports the Fund for Tuition Assistance, SLS' most important tool for keeping tuition affordable and enrollment steady.

The Rebel Golf Classic is a great day of golf at Edgewood Country Club. Now in its 17th

year, it is a fun way to give and a good networking opportunity for alumni and friends. The event will be chaired again next year by Jim Sweeney '80, and held May 12, 2008. (See pg. 4.)

I have a life insurance policy I no longer need. Could I give that to the school?

Certainly! There are two ways you could make SLS the beneficiary of your life insurance policy: 1) Name SLS as the primary beneficiary to receive part or all of a policy and 2) Name SLS as a secondary beneficiary. Instead of making a charitable bequest in your will or trust, you can purchase a life insurance policy in that amount naming SLS as owner and beneficiary. Your premium payments entitle you to an income tax deduction each year you pay the premium and the gift amount you determine is unaffected by changes to your estate as long

as premiums are paid.

Do you accept gifts of stock, annuities, IRAs and other investments?

Yes. You can make a contribution of appreciated stock in lieu of cash and avoid paying capital gains taxes. It is also possible that, if you cannot use

the entire deduction in that year, it can be carried over for up to five years. Using a retirement plan to fund a gift to SLS can be a wise decision if your estate is subject to federal estate taxes. (IRAs, 401Ks, Keogh plans and deferred annuities are subject to federal estate taxes.) Without proper planning, up to 75 percent of plan assets can be lost to taxes. You might consider creating a Wealth Replacement Trust, an irrevocable trust that purchases life insurance on the retirement plan owner's life. When the owner dies, the trust is funded by life insurance death benefits and passes estate tax free to beneficiaries. When the surviving spouse dies, the retirement plan assets avoid a 'triple tax' and pass to SLS. For details, call a financial planner or your estate planning attorney.

I am not wealthy. How can my small gift of \$10 help when tuition is \$6800 a year?

Many SLS families struggle considerably to give their children a Catholic education. As a person of limited means, you know \$10 means a lot to you so you can easily imagine what it means to our parents. There are 10,000 alumni of SLS, South Hills Catholic and Elizabeth Seton. If each one gave just \$10, we could help many of our families. Currently, only about five percent of our alumni give regularly and we would love to increase that number. Please join the 500 or so alumni who 'pay it forward.' Your \$10 really DOES make a difference.



SLS will work with you to develop gifts for specific programs, activities, scholarships and facilities



Nick Merrick '81 established the J.L Merrick Academic Scholarship in his mother's honor. Marisa Rieber and Stephen Milcarek, here with Judy Merrick and Sr. Patricia Laffey, are the 2007 recipients.

What's new on campus this year?

Seton-La Salle welcomes **Judith Caves** who replaces **Lorraine Shadle**, longtime SLS guidance counselor who retired this spring. We will miss Lorraine, and wish her well.

SLS also welcomes five new teachers: **Jean Brinzer**, Chemistry teacher; **Michael Joyce**, Social Studies teacher; **Matt Duran**, Latin teacher; **Judith Wolfe**, religion teacher; and **Joe Kramer '80**, computer/multimedia teacher.

The **Kay Murdy Library** at SLS is a heavily used resource area for SLS students. Last summer, state-of-the-art computer workstations were installed and this summer, new carpet and a fresh coat of paint were added. An anonymous donor helped with the renovation which was done to complement the recent renovation of the main office which is just across the hall.

Another exciting project under way at the school will benefit students, as well as SLS families and other community members. Thanks to a grant from PANA School and Community Programs and an alumni donor, SLS is creating a walking trail on its campus and preparing to implement a walking program as part of its Physical Education program.

Rebel Classic Tees off with Sweeney '80 as Chair



Mike Clark and Rocco Panucci '81 stop for a photo op.

Seton-La Salle was again blessed with a beautiful day on May 14 when about 100 golfers gathered at Edgewood Country Club for the 17th annual Rebel Golf Classic. The success of the event was due to the planning and participation of Honorary Chair, Jim Sweeney '80, Chair Emeritus, Thomas Donahoe '65, Committee Chair, Rocco Panucci '81, and committee members Lucy Bruce, Deborah Cochran, Tony DeFilippo '69, Al Dick '66, Amy Ganser '90, Toni Luvara, Patrick McGonigle, Rocco Panucci '81, Janice Perella, Nancy Rizza, Tom Shanahan, Marilyn Walsh '76 and Timothy Zugates '71.

Thanks are also due to our event sponsors: Express One/Jim Usher '88; Waste Management/Ben Woods '80; The Hoban Family; The Perella Family; Tom

Donahoe '65 and our Hole in One Sponsor Southpointe Motors/Vince Panucci '77.

Following the outing, there were plenty of raffles, door prizes and some great auction items. Thank you to the numerous gift donors who were also part of the success and helped SLS raise more than \$20,000 for the Tuition Assistance Fund.

Special thanks to WTAE's Mike Clark for acting as emcee and joining SLS for the day. Edgewood Country Club again put on a first-class outing for alumni and friends.



Princeton Financial was the foursome to beat this year. (l to r) Frank Wertz '87, Tom Brown, Mike Cavanagh and Tim Gray.

SAVE THE DATE!
The 18th Annual SLS Rebel Golf Classic
 Monday, May 12, 2008 at Edgewood Country Club
 For details or to join our planning committee, call 412-561-3583 x 119.

Elizabeth Seton Class of 1963 classmates held an impromptu reunion in The Village, Florida last spring. (l to r) Attendees included Maebeth Seiling Fitzgerald, Susan Kuta Zak, Patti Quiter Studders, Pat Wesner Gill and Sondra Ruhling LaHouse.

Reunion News

- ▶ **Sheila (O'Connor) Lang** from the **ESHS Class of 1947** is seeking help in planning a 60th reunion. Call her at 910-448-0704 if interested.
- ▶ **The ESHS Class of 1957** 50th Reunion will be held October 6, 2007 at the Crown Plaza Hotel, Coraopolis, PA. For information please call **Terry (Schilling) Mueller** 412-885-3440.
- ▶ **SHC Class of 1977** will hold its reunion Saturday, October 20, 2007 at F. Tambellini Ristorante Downtown next to the Benedum Theater. Call **Charlie Pellegrini '77** at 412-512-1021 or **John Block '77** at 412-401-7258 for information.
- ▶ **SLS Class of 1987** will hold its 20 year reunion at the Bradley House on Friday, November 23, 2007 from 7 pm to midnight. **Kelly Yovetich Koropol** and **Bridget Sinneway** want your help to find lost alumni. Contact them at kelly05k@excite.com.
- ▶ **The Class of 1997** is holding a reunion on Saturday, November 24, 2007 at the Library on the Southside. Anyone interested can contact **Maggie Powers '97** at sls10year@yahoo.com.



Reunion planning made easy

Reunions are a great way to stay in touch, network with friends and enjoy memories of your high school days. With minimal effort, you can have an event you'll never forget! Now is the time for the classes of 1998, 1993, 1988, 1983, etc. to begin planning. From an informal brunch, to a 'smoker' at SLS, to a formal weekend event, or just a night out at a local tavern, we will work with you to put together the event you envision. Amy Ganser '90, in the SLS Development Office, is ready to assist you. Call today at 412-561-3583 x 136 to get started.

SHC Class of '66: Reunion of the Strange Birds



South Hills Catholic High School Class of 1966 held its 40th reunion at the National Aviary on Pittsburgh's North Side in February. Sixty-six alumni including New Age musician Esteban, known as Stephen Paul when he was an SHC student in the '60s, gathered for the event. The theme of "Strange Birds" was appropriate for the venue, and the signage and materials reflected "Route 66." The group enjoyed dinner



catered by Atria's with items donated by area establishments including Rania's Catering, the Clark Bar and Grill, Lunardi's Ristorante, Calabria's Restaurant, and The Breadworks.

Many in attendance went to Atria's following the event where Esteban performed for the group.

Esteban also generously agreed to visit SLS the following Monday before his trip to the airport to return home.

Esteban talked to the

students about the importance of listening to one's heart and expressing oneself through the arts or by using one's gifts and talents. He challenged students to step away from the electronic media that bombards them and give themselves a chance to learn who they really are from within. He then mesmerized the audience as he played a medley of songs on the guitar.

At the end of this performance Esteban offered to give away five guitars to students who wrote the best essays about the importance of music in their lives. The five students who won received their Esteban Guitar Packages just before school ended in the spring.

For more photos of the event, you can log on to shc1966.com.

Esteban with students following an appearance at an SLS assembly.

Privately funded scholarships a "godsend" for families

With tuition at \$6800 per year, parents and students are grateful for any aid they receive. In recent years, thanks to alumni and friends who have taken an active role in the future of Catholic education, the number of privately funded scholarships has risen considerably. Seton-La Salle can now offer more than \$90,000 annually in scholarships and awards to families and students through these funds:

- The Anna Marie Catanzaro Scholarship
- The Patrick J. Mackey Scholarship
- The Gus Gillespie Scholarship
- The J.L. Merrick Academic Scholarship
- The James L. Palmer Scholarship
- The Edward Martin Ryan Jr. Memorial Scholarship
- The Bishop Donald W. Wuerl Scholarship
- The Pgh. Foundation Scholarship for St. Sylvester Students
- The Rita Capozzi Award
- The William C. Stout Scholarship



Over \$25,000 was awarded to incoming freshmen this year. Students from area parishes received awards ranging from \$1000 to \$3400. Above with Sister Patricia Laffey are some of the incoming freshmen who received scholarships including Christopher Vaughan, Maria Rodaitis, Ben Skiff, Erin Fitch, Nino Tommarello, Elizabeth Harrison, Anthony Sigg, Meghan McLane and Zachary Dominick.

All the scholarships listed, except the J.L. Merrick Scholarship and the Rita Capozzi award, are based on need as well as service to church, school or community. The Merrick Scholarship is based solely on academic achievement. The Rita Capozzi Award is a religious service award.

Coeducation thrives at SLS



Sister
Patricia
Laffey,
Principal

“Catholic high school prepares students not only for college but for life. They arrive as children but by the time they graduate, they must take on many adult responsibilities. The media manipulates young people with much misinformation, especially in areas of sexuality and morality. Here, they live, learn and grow in a faith-filled environment.”

From the time Elizabeth Seton and South Hills Catholic High School merged to the present day, there have been many discussions about what has been lost or gained in the school’s transition to coeducation. Now, after 27 years of educating both boys and girls in the same classrooms, many teachers, parents and students have arrived at this conclusion: The coeducational experience at SLS has a lot to offer.

The economic advantage is evident. Without the merger, Pittsburgh’s South Hills region may not have been able to sustain a Catholic high school. Area population has been on a continual decline for the past 30 years. The primary reason the schools merged 26 years ago was

lower enrollment and rising costs. Enrollment has held relatively steady in recent years, with about 550 students currently in attendance. The merger enabled the rich heritage of both schools to continue under one roof.

Other advantages are also evident. Our young men and women can interact with members of the opposite sex on a daily basis in a safe, supervised, Christian environment. In the classroom, on the stage, in the band, getting involved in one of the ever-expanding selections of activities available for boys and girls, gives students healthy experiences with the opposite sex.

Advocates for single-sex schools point to research that shows all-boys or all-girls schools do a better job. There is evidence, for example, that some girls in single sex schools show higher levels of self-esteem or better scores in math and science. Some studies show that boys in single sex schools remain more interested in language arts and writing. Yet, according to *The Brookings Institution Papers: 1999 Single Sex Education Report* by Rosemary Salamone, these studies are



Madelyn
Bucci,
Class of
2009

“When I started here as a freshman, I remember being excited and very scared. Now, it’s my life! I found new friends, new interests and learned I’m capable of doing anything I put my mind to.”

inconclusive. The American Association of University Women’s report, *“Separated by Sex”* concludes that a school’s smallness of scale, equitable teaching practices and focused academic curriculum are as important—if not more critical—to student achievement.

As for Seton-La Salle, its affiliation with the Sisters of Charity and the Christian Brothers is the basis for its mission and educational excellence. SLS remains committed to the same high standards that were inherent in the two original schools, including:

- An excellent college preparatory academic program that encourages boys and girls to pursue studies according to their gifts and abilities.
- High rates of college admissions. More than 97 percent of our students plan to attend college and our graduates were offered more than \$4.5 million in college scholarships.
- Opportunities for high achievers including honors and Advanced Placement courses, academic clubs and support for competitions.
- Parental involvement as a key to success. Parents are engaged online and in person in academics, sports, and activities, playing a vital role in their children’s success.
- Faculty and staff role models are not only experts in their fields, they are also models of Christian living for students and one another.
- A learning environment that stresses acceptance, support and respect.
- A wide range of extracurricular activities and athletics so that all students can be accommodated and given the tools necessary to achieve all they can.

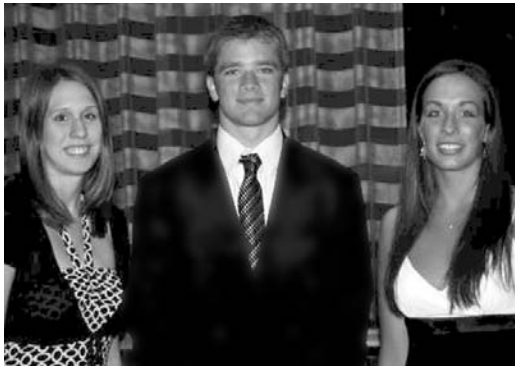


John
Manear
Faculty
1964 -

“As I forge ahead into 43 years in the classroom, I am sometimes asked why I don’t take advantage of the opportunity to retire. My response is simple: Why walk away from something that you are just learning to do effectively? Teaching (and learning) is something that all of us personalize as we do it. No amount of educational theory has prepared me for this journey. My years at SHC and SLS have allowed me to learn how we learn, and one thing that I have learned is that gender is not the primary consideration. It’s all about being in touch with who we are and what we can become. Our curriculum and school culture continue to help all of us, students and teachers, make that contact. Why would I want to disconnect from this source of energy until I have to do so?”

Student Currents

Megan O'Keefe '07 won the 2007 WPIAL Scholar Athlete Award and received a \$5,000 stipend at a luncheon in May. **O'Keefe** was also a semi-finalist in the 2007 National Scholar Athlete Milk Mustache of the Year Award.



Megan O'Keefe, Matt Rodgers and Jessica Heintz were honored at the YMCA's 33rd annual Scholar Athletes' banquet. Megan now attends Notre Dame, Matt Rodgers signed with University of Akron and Jessica Heintz is enrolled at Duquesne University.

Three 2007 SLS graduates were honored at the YMCA's 33rd annual scholar athletes banquet: **Jessica Heintz, Megan O'Keefe** and **Matt Rodgers**.

The Rebel Baseball team had an outstanding season but it ended with two heartbreaking losses. The WPIAL championship moved out of reach during a 7th inning rally by North Catholic (4-3 final) and the PIAA semi-finals slipped away in the sixth inning of the Rebels game against Bald Eagle Area High School.

The Lady Rebels Lacrosse team was ranked in the WPIAL Top Four, and had a great season playing AAAA lacrosse against schools like Peters Township, Upper St. Clair and Mt. Lebanon. **Andrea DeFilippo '07** was named 2007 Lacrosse MVP and Almanac

and Christian leadership. **Luke Modrak '07** and **Scott McClelland '08** were selected, and **Jamie Havens '07** was commended.

Lauren Hess '10 won an apprenticeship with Saturday Light Brigade, an award-winning public radio program. Last summer she won a contest to work with Radio Disney.

Scott McClelland was recognized as Trib Total Media's 2007 South & West Outstanding Young Citizen. He plans to study pharmacy at Duquesne or Toledo University.

Premier Performer.

The regional weekly newspaper, the Almanac named **Terry Boland '07** and **Gino Gradkowski '07** as finalists for Male Athlete of the Year and **Megan O'Keefe** and **Jessica Heintz** for Female Athlete of the year.

Two SLS students received the St. Timothy Award presented annually by the Diocese of Pittsburgh to young people who exemplify the qualities of moral integrity, prayer and good works

In our prayers

Please remember in your prayers these recently deceased members of the Seton-La Salle community:



- Thomas H Bauman '67
- Carol Ann (Talerico) Belch '55
- Robert J Bradley '86
- Mary E Cartwright *
- James M Cyphers '67
- Sister Margaret Marie Dowd, SC *
- Flora Marie George '45
- Gail Kennedy *
- Mary H (Rancel) Reitmeyer '55
- Mary K (O'Connor) Roderique '50
- Catherine Shaw '47
- James M Smith '61
- Carita M (McKee) Steiner '46
- Marlyn H (Spell) Thistleton '55
- Neal Vantosky '70
- Rose Marie Walch '46



* denotes former faculty

"Mr. K" wins Golden Apple



Seton-La Salle's social studies and US History teacher **Brian Klisavage '83**, received a Golden Apple Award from the Catholic Diocese of Pittsburgh in April. Klisavage, known as "Mr. K" to students, is a 1983 SLS graduate. He holds a BS in Education from Duquesne University and taught at St. Gabriel Catholic Elementary before returning to his alma mater. In addition to teaching, Klisavage has served as the Lady Rebels Lacrosse coach since the team's inception nine years ago and was recognized as Lacrosse Coach of the Year by WPIAL in 2007. He has moderated several clubs, including the Rebels for Life Club which is one of the most active student service organizations in the school. He currently serves as school activities director and has also held the position of athletic director.

The Golden Apple award was established as a way for the diocese to honor those who have dedicated their life to teaching in Catholic schools. The award was presented on Tuesday, May 29 at the Pittsburgh Hilton.

Corrections:

Geraldine Snyder '51 and **Helen (Terzis) Fitch '49** were erroneously listed among the deceased in our last issue. The deceased Geraldine Snyder was a former staff member at SHC; not an alumni.

Class Notes

Class of 1956

M. Suzanne (Slagle) Frey and husband Tom have been married for 46 years and have made their home in Houston, TX for more than 30 years now. They raised four sons and two daughters and now enjoy their 18 grandchildren and one great grandchild.

Class of 1960



Charles Modispacher was elected chairman of the board of directors at Jefferson Regional Medical Center. Modispacher, a certified public accountant and principal at Parente

Randolph, has been on the medical center's board for the past 10 years. In addition to his service to Jefferson Regional, Modispacher has served on the boards of organizations including South Hills Country Club and the Early Learning Center.

Class of 1962

Leonard Ransil retired in 2005 after 32 years as co-founder, teacher, and principal of Word of God Academy in Erie, PA. He and wife Elaine have four children and eight grandchildren. Since retiring, Ransil completed his second book and produced a CD of worship music. He enjoys visiting grandchildren, writing, composing, golf, and mentoring, and gives seminars on Worldviews in churches and home school conferences. For information, visit www.uponthisrockfoundation.com. Ransil taught English and served as assistant band director at SHC in 1968-1969 and is glad to hear from former classmates and students at lennysax@yahoo.com.

Duke Geddis received the 2006 Distinguished Alumni Award from the University of Pittsburgh Graduate School of Public Health for his 40 years of work on the air pollution aspects of the steel industry and his 38-year career as an Air Force Reserve weapons officer.

Class of 1963

Patricia Wesner Gill and her husband Tom retired to a golf community near

Chambersburg, PA, to be near their daughter Mary Beth, and her husband and three children in Virginia and newly married daughter Krista of Greensburg. Their son Jim lives with his wife and three children in Wyckoff, NJ.

Class of 1965

Robert Luffy was recently chosen as the 2007 Metcalf Award Winner for outstanding contributions to the field of engineering. He is president and CEO of American Bridge Company, a position he took in 1993 when the company was struggling. American Bridge is now the leading structures contractor in the country. Luffy is actively involved in the engineering field, and in civic and community organizations including the Vietnam Veterans Leadership Program. He resides in Franklin Park with his wife Debbie and their five children.



Luffy (left) receives the Metcalf Award from ESWP President Alex G. Sculli

Class of 1966



Mary K. McDonald, a partner with McCarthy, McDonald, Schulberg & Joy, was recently appointed by Mayor Luke Ravenstahl and confirmed by the City Council to a four year term on the City of Pittsburgh Commission on Human Relations. The Commission's mission is to eliminate discrimination in employment, housing and public accommodations through education and civil rights law enforcement. It also investigates civil rights violations involving City employees.

Class of 1967

Eleanor "Briggy" McCarty is alive and well and living on Maryland's eastern shore in a tiny town called Berlin.

Elizabeth "Betty" (Brennfleck) Pascuzzi earned her Doctor of Education degree from Nova Southeastern University in

Instructional Technology and Distance Education and was designated as an Outstanding Dissertation Award recipient. Betty and Todd, her husband of 31 years, are partners in a consulting firm, Pascuzzi & Associates, Inc. doing business as Managed Care Learning (www.managedcarelearning.com). As an instructional strategist and designer, Betty works with her managed health care clients while Todd creates graphic designs for printed and online content. Reach her at betty@managedcarelearning.com.

Class of 1969

Attorney **Frederick Thieman** has been named president of the Buhl Foundation one of Pittsburgh's largest philanthropic groups. Thieman is the sixth president of the 80 year old institution. He is currently a partner with Thieman & Ward, a firm he founded. He served as US Attorney from 1993-1997, appointed by President Clinton. Before that, he was a practicing attorney, federal prosecutor and law clerk to the PA Supreme Court.

Class of 1970

Jan Sell is a real estate appraiser and president and founder of Sell & Associates in Tempe, AZ. He also is the general partner and managing member of numerous real estate investment entities. Sell graduated from Arizona State University in 1974 with a Bachelor of Science degree in Business Administration with a specialization in real estate.

Class of 1971

Aldo Zini was a finalist for the Pittsburgh Business Times' 2007 Entrepreneur of the Year Award. Zini, a 1975 graduate of the University of Pittsburgh in industrial engineering has merged engineering and healthcare throughout his career. Most recently, Zini joined Aethon and helped the company to develop a system that uses radio frequency ID tags to help hospital staff keep track of supplies. The robots, called "tugs," are now in



**Elizabeth Seton High School
South Hills Catholic High School
Seton-La Salle High School**

more than 100 hospitals across the US.

Class of 1972



Cranberry Township Police Sergeant **Dave Kovach** earned a degree in criminology and psychology from Indiana University of PA in 1976 prior to his career in law enforcement.

Class of 1973

Donald Lee was the executive producer of *World Trade Center*, the critically acclaimed film tribute to heroes of 9/11 directed by Oliver Stone.

Class of 1978

Albert G. Horvath has been named vice president for finance and business at Penn State effective June 29, 2007.

John Lee is in his fifth season as a sportscaster with MSA Sports Network. In addition to his job as a postal worker, Lee spends his evenings broadcasting basketball, baseball and football games.

David Morehouse, who worked as a consultant for the Pittsburgh Penguins during negotiations for a new arena, has been named president of the team. Morehouse will oversee the redevelopment of the Mellon Arena site, government and corporate relations, marketing, corporate sales, and communications. A graduate of the Harvard University John F. Kennedy School of Government, Morehouse previously served as a senior advisor to the John Kerry for President campaign and worked in the Clinton-Gore White House, at the Pentagon, and on Capitol Hill.



Class of 1979

Tom Merrick recently joined the Pittsburgh branch of the Harrisburg-based law firm Thomas Thomas and Hafer as a partner. He will work as a civil defense lawyer and plans to develop a white-collar criminal defense practice within the law firm.

Sue (McGuigan) Simmers received a Carnegie Science Center Award for Excellence in education in May, 2007. She is a science and math teacher at Beechwood Elementary School in Beechview. She earned her bachelor's degree in education and science from the University of Pittsburgh and a master's degree in education at Duquesne University. She has taught in the Pittsburgh Public Schools for 20 years and has three daughters, one currently in attendance at SLS.



Class of 1980

Allegheny County Council unanimously appointed **William Lestitian** to represent District 12 following the resignation of his predecessor. Bill received his BBA from the University of Notre Dame in 1984 and his JD cum laude from the University of Pittsburgh School of Law in 1990. The Pittsburgh Business Times named him a Fast Tracker in 2004, and Law & Politics named him a PA Super Lawyer in 2004 and 2005. He is the co-managing shareholder of Rothman Gordon PC, one of Pittsburgh's largest law firms.

Class of 1981

Vince Sortino was named the Baldwin-Whitehall School District athletic director in May. He has worn many hats within the Baldwin athletic department since his arrival as a special education teacher at Baldwin in 1990. His coaching resume includes stints as both boys' and girls' varsity basketball coach and boys' varsity softball coach.

Class of 1982

Tom Slowey and his wife Megan welcomed their son Tommy to their world in 2006. Tom is manager of corporate tax planning for Equitable Resources, Inc. in Pittsburgh.

James Wilding of Soffer Organization received top honors from the Western PA Chapter of the Society of Industrial and Office Realtors of the National Association

Other Alumni News

Rev. John Charles Moore, who taught at South Hills Catholic from 1957 thru 1961 as Brother Fidelity Robert, sent greetings from Frederick, MD. He reports that he still keeps in touch with several of the students from the Classes of 1960 and 1961 including **Jack Samuels**, **Ed Blank** and **Lawrence Lang**.

Brother James Butler has been appointed Project Director in the restructuring of the East Coast Districts of the Christian Brothers. Brother Jim was a member of the SLS Advisory Board for several years and former SLS teacher.

of Realtors for the Owner/User Sale of the Year, Quantum II and III properties.

Class of 1983

Tom Tuchnowski and his family recently returned to the Pittsburgh area after living in Cincinnati, Orlando, and Chicago. Tom is celebrating his 20th anniversary with Johnson Controls this year where he is currently regional vice president and general manager for the company's East Central Systems business unit. Tom, his wife Anne, and his thirteen-year-old daughter Christy reside in Mt. Lebanon.

Class of 1984

Suzie McConnell-Serio was inducted into the Women's Basketball Hall of Fame in June. She was hired as Duquesne University women's basketball coach in April and was inducted into the the WPIAL Hall of Fame in the early spring as part of its 100th year anniversary.

Jennifer Ratay was named marketing counselor for Providence Point in Scott Township. Prior to that, she spent five years in health care sales and worked for six years in retail banking with Mellon and PNC Banks.

Class of 1985

Tom Rogozinski earned a BA in Science Education from Indiana University of Pennsylvania in 1991. He taught at St. Elizabeth School in Pleasant Hills for five

continued on next page

Class Notes

years then moved to New Mexico. He has since earned an MA in Educational Leadership at Western New Mexico University and just completed his third year as the Assistant Principal at Gallup Catholic School. He coaches the high school girls' and boys' cross country and track teams. The boys took fourth place in the NM State Class A Championships in May.

Class of 1986

Kristen (Kierzkowski) Pontello and her husband Rich welcomed their second child John Luke on May 8, 2007.

Class of 1987

Pepper Hamilton LLP, located in downtown Pittsburgh, named **Dennis Very Of Counsel**. Dennis focuses his practice on commercial litigation.

Class of 1988

Christine (O'Leary) Alleruzzo resides in Philadelphia with her husband of two years, Michael. Christine has been a licensed pharmacist for 13 years. She has a BS degree in pharmacy and a pharmacy doctorate from Duquesne University and completed her clinical residency at the University of Pennsylvania Hospital. Currently, she is senior affairs specialist for Duramed Research.



Ken Wahlster lives in San Diego and owns the largest online bike parts store in the USA. Ken started up the company in 2000, with a 'virtual' location using their home office. He now has 77 employees.

Class of 1989

Barbara (Gibbons) Lang and her husband recently welcomed their eighth child, Matthew David on April 26, 2007, the couple's 17th wedding anniversary. He joins five brothers and two sisters. The Lang's seventh child Ben underwent treatment for cancer during 2006 and is currently cancer-free, inspiring Barbara to plan on becoming a certified RN and

eventually a nurse practitioner in cancer research when Ben is clear for five years.

Class of 1991

Kristen (Zahringer) Flaherty and her husband Sean celebrated their tenth wedding anniversary in October 2006. Sean received a promotion, and the family moved to Canton, Ohio, where the couple just finished their "dream house." Kristen is a stay-at-home mom to Parker (8), Evan (6), and Madison (5).

Tony Gigliotti, director of Human Resources at Children's Hospital of Pittsburgh, recently published an online article for Talent Management magazine entitled "Disciplinary Action for Management Staff."

Class of 1993

Nicole (Radu) Wilkens and her husband Mitch have been married for four years and have two children, Jacob Thomas, born September 5, 2006, and three-year-old Jordan Alyssa. The family lives in Raleigh, NC, where Nicole works from home for the federal court in Washington, D.C. and Mitch works as video coordinator for Duke Football.

Scott Faust works at Merrill Lynch Financial Services in Pittsburgh as a finance analyst and frequently gives sermons at Hilltop Baptist Church's Wednesday Night Enrichment Services. He and his wife Stephanie, who is a teacher at Brentwood High School and an on-line curriculum developer, live in Baldwin.

Class of 1994

Nikki Hladio lives in Raleigh, NC and is studying at the School of Veterinary Medicine at North Carolina State University. She will receive her DVM in 2008.

Kevin Mulooly married Anne Pfaffenbach on August 18, 2007 in Frederick, Maryland and is living in Washington, D.C. He was recently promoted to Senior Publications Editor for the Corporate Executive Board in Washington.

Class of 1995

Kristi (Caughey) Bonacci and husband Dan welcomed their first child, Cameron John on October 16, 2006. Kristi is currently a Senior Tax Accountant at Schneider Downs & Co.

Molly (Sander) Riva announced the birth of her daughter Trinity Maryann on May 22, 2006. Molly teaches communications at Penn State Altoona and is involved in community theater. She lives in Altoona with her husband Paul of six years, a medical sales representative.

Carrie (Brassart) Farmerie and her husband recently welcomed their third child.



Erica (Thoma) Slobodnik recently welcomed third child Apollo to her family. He is shown here with eight-year-old sister, Victoria, and a one-year-old brother, Hunter.

Class of 1996

Andrew DeSilva graduated from Duquesne University with a degree in accounting. He is a CPA and now working as a client service manager with Resources Global Professional, a business services firm that helps industry leaders solve problems and develop business solutions.

Matthew Busha graduated from Penn State University with a degree in Mechanical Engineering technology. He and fiancée Roberta Henning are planning a September 8 wedding.

Class of 1997

Fara Camille Falvo Garretson married Canevin alumni Luke Garretson on May 4, 2007. She graduated from Duquesne University in 2001 and from the Pittsburgh Institute of Mortuary Science in 2003, where she was the Vice President of her class. The couple lives in Pittsburgh. Fara-Camille is now the third generation of Funeral Directors in her family. Husband Luke works with CombineMed.



Class of 1998

Jason Startari is engaged to marry Monica Restrepo, a Duquesne University graduate and public relations manager at Shawnee Inn & Golf

Resort, Shawnee-on-Delaware. Jason is also a Duquesne graduate with a bachelor's degree in health management systems. He is employed as an administrative assistant at Shawnee Holdings, Inc.

Class of 1999

Scott Duffy graduated from Penn State University in 2003 with a bachelor of science degree in electrical engineering. He now works for Northrop Grumman Corp. in Washington, D.C.

Class of 2000

Sara (Cirelli) Mastandrea married Michael Mastandrea in April, 2006. Their wedding was held at St. Paul's Cathedral and the reception was at the LeMont. Sara graduated from John Carroll University, earning a degree in Accountancy. The couple lives in Princeton, NJ, where Sara works as an auditor for PricewaterhouseCoopers.

Ryan Osborne works as a financial advisor and registered representative for Ameriprise Financial Services in Pittsburgh.

Lisa Wellinger and **John (Jay) Hooper** were married in June, 2007 at St. Germaine Church in Bethel Park. The bridal party included SLS alumni **Jaclyn Fury**, **Colleen Cain**, **Jennifer**



Flavin, **Marlene Rieland**, **Jeffrey Dears**, **Daniel Hooper**, **Geoffrey Hooper** and **Patrick Collins**. The bride and groom are 2004 Mercyhurst College graduates. Lisa earned her masters degree from University of Pittsburgh in 2005 and teaches first grade at St. Thomas More. Jay is with PNC Financial Services Group. After a honeymoon in Puerto Vallarta, the couple resides in Whitehall.

Class of 2001

Jonathan E. Harris graduated from the University of Pittsburgh in Civil and Environmental Engineering on April 29, 2007. He now works for Honeywell Aerospace in Colorado Springs, CO.

Class of 2002

Michael Gigliotti graduated from Robert Morris University in May 2007 with a BS in Information Systems Management and a MS in Information Technology Security and Assurance. After over 7 years of service at CVS/Pharmacy, Michael left to begin a career as a Systems Analyst for Magee-Women's Hospital of UPMC Health System. He plans to teach part-time in the near future, and aspires to obtain his PhD in Information Technology.

Will Seath returned to Notre Dame this fall to pursue his master's degree in Architecture. Seath graduated from UND in 2006 with a BA in Political Science. He worked as a reporter and anchor on KQV Newsradio 1410 AM for two years interviewing people, such as Gov. Ed Rendell, Senators Specter, Casey and Santorum, and four of the 2008 presidential candidates. Will plans to continue filling-in at KQV during the holidays.

Genevieve Sullivan and a fellow Clarion University classmate received first place at the 38th Annual Commonwealth of Pennsylvania University Biologists meeting in the molecular and cellular biology poster category for "Does Contact with and/or the Presence of Bone Marrow Stromal Cells Influence the Fate of Hematopoietic Stem Cells In Vitro."

Class of 2003



Michelle Bova graduated from Carnegie-Mellon University with a degree in creative and professional writing. Last spring, she received a first place Adamson Award for Excellence in Writing at CMU for nonfiction writing.

Bridget Bowes served as chairperson for

the Cardinal O'Connor Memorial Life Conference and Jesuit Heritage Week at Georgetown University this past winter. She graduated from Georgetown in May.

In May, **Christopher Buffington** started a 10-week internship at Marc-USA, located in Station Square as part of the "New Business Team." He will graduate with a BA in Business in Dec. 2007.

Chris Eger, a senior at Tri-State University, placed second in the American Society of Mechanical Engineers District C Student Competition at Purdue University in March. The competition includes 58 schools. Eger and his project partner designed and built a system to cool plastic parts for the injection molding industry.

Ann Mazur graduated from Notre Dame with a 4.0 in English. She came in 12th at the Big East Cross Country Championship, 21st at the NCAA Regional Cross Country and seventh at the Big East Outdoor Track 10K. As a member of UND's first track team to win the Outdoor Big East, she is returned to UND to begin work on her MA in English and complete a fifth year of eligibility.

Katelyn Wood, mezzo-soprano, performed her senior recital with songs in Russian, Hungarian, German, Gaelic, French, and Czech at St. Mary's College in Notre Dame, IN.

Class of 2005

Abby Buffington was awarded the 2007 Women's International Club Scholarship from the Nationality Rooms at the University of Pittsburgh. The scholarship is a seven week stay in Madaba, Jordan, working on The Wadi-Ath-Thamad Project, an archeological excavation where students and archeologists from several countries work together.

If you enjoy reading news about SLS alumni, please consider making a gift as a SLS Review Subscriber. Just \$10 will cover our costs for your two annual issues.

Aruba, The Big East and "Scrubs" are highlights of upcoming Auction

Last year, the woman who won the walk-on role on the funny sit-com, "Scrubs," was delighted with her LA adventure. Those who won tickets to the "Big East" said they'll be trying to win them again this year. Why don't you join us for the SLS Annual Dinner Auction this year and see what great gifts you can win?

With about 400 auction items, raffle prizes and giveaways, it's hard to imagine anyone leaving at the end of the night without *something*.

Seton-La Salle's largest annual fundraising event, the "Green & Gold Gala" is chaired this year by **Patrick and Doris McGonigle**.

Lynn Sawyer is our guest emcee and **Marc Field** is the auctioneer, so it will certainly be a memorable evening.

Gifts available for bidding include travel and getaways, autographed sports items, event tickets, home decor, Christmas decorations, and toys. There are also some things you can't get anywhere else, like college

scholarships, autographed SLS team items, and the "Scrubs" trip arranged by **Sean Crowell '86**.

Proceeds from the Green & Gold Gala purchase important classroom learning tools like computer labs and software, Smartboards, and digital photography and music equipment.

SLS is now accepting gifts for the event. If you have a vacation home, event tickets, or a business that can donate a service or item, please call Amy Ganser at 412-561-3583 x 136.

GREEN & GOLD Gala

Join us for the Annual SLS Dinner Auction Sat., Nov. 10, 2007 Hilton Garden Inn at Southpointe



Shop among over 400 gifts including sports equipment, memorabilia and event tickets.

In search of alumni

If you know the whereabouts of any alumni from the Classes of '78 or '88 listed below, please have them contact Amy at 412-561-3583 x 136 or e-mail to gansera@slshs.org

- William M. Alexander '78
- James Bernardo '78
- Patricia Lynn Biercewicz '78
- Jerome T. Brickett '78
- Susan J. Chettle '78
- Carmella N. David '78
- Michael N. David '78
- Gina Marie DeAngelo '78
- Lorraine Evans '78
- Albert G. Horvath '78
- Audre M. Khuze '78
- Ralph T. Martin '78
- Michael G. Mazzie '78
- Mark J. McGrath '78
- Diane Moran '78
- Diane R. O'Connor '78
- John M. O'Donnell '78
- James P. O'Shea '78
- Theresa Parise '78
- Elaine Peters '78
- Deborah Brylka Pokar '78
- Edward L. Prinz '78
- Edward V. Ridge '78
- Nicholas J. Roper '78
- Celina M. Schneider '78
- Francine Scumaci '78
- Lynn Ann Ballard Shechter '78
- Melanie Askins '88
- Susan M. Turek Byrne '88
- Jeff Coury '88
- Matthew J. Cummings '88
- Eric R. Dieterle '88
- Maureen Esposito '88
- Colleen P. Flannigan '88
- Diane Folino '88
- Antonella Strangis Gribbs '88
- Victor Joseph '88
- Carely A. Kielar '88
- Michele M. Kujawa '88
- Melissa A. Mace '88
- Daniel J. McMinn '88
- Michelle Perry '88
- Michael Quinten '88
- Sherri Ray '88
- Gregory S. Rea '88
- Edward Rieland '88
- Patricia M. Ryczkowski '88
- Nicole L. Smith '88
- Denise M. Woods '88
- Pamela R. Woods '88
- Christopher J. Zeto '88

Save the Date!

COMEDY NIGHT@SLS

FEATURING

Nationally known comedian and SLS Alumni
Buzz Nutley (Matt Wohlfarth '81)

also appearing

Shaun Blackham

plus an alumni reception
and other entertainment

FRIDAY, APRIL 18, 2008

7-10 PM \$20 person (Must be 21 or older)



Building on our tradition of excellence

Report on Annual Giving

July 1, 2006-June 30, 2007

Gifts to the Annual Fund at Seton-La Salle Catholic High School totaled \$108,458 for fiscal year 2006-07.

This is an increase of about 40 percent from the previous year. This happened despite the fact we had 36 fewer donors who responded to the annual appeal mailing. SLS is grateful to the alumni and the larger school community who helped us achieve this milestone. Though fewer of our constituents replied to the mailing (393 this year vs. 429 last year), the overall amount received was larger and the number of *alumni* giving to the fund increased (313 vs. 309).

A primary goal of our fund-raising effort last year was to broaden the base of support. Despite the decrease in general gifts, we had a good response to a new raffle and to some of our fund-raising events. The 999 Raffle gave participants the chance to win \$10,000 with a \$20 ticket purchase. There were 375 participants who generated \$8,400 in proceeds. We raised \$38,268 through events such as the Rebel Golf Classic, the Hall of Fame Dinner and Comedy Night. Total attendance at these events exceeded 300.

The proceeds from the annual dinner auction are not used for Tuition Assistance and therefore are not included in this report. However, the Dinner Auction is the school's largest annual

2006-07 Annual Fund for Tuition Assistance Statistics

Gifts to the SLS Annual Fund come primarily from outright donations, but the fund is also supported by an annual raffle and by special events.

General Donations	\$108,458
# of donors	393
Average gift amount	\$278
Event Income (gross)	\$38,268
<small>(Hall of Fame, Comedy Night, and other events that support Tuition Assistance Fund)</small>	
# of participants	297
Average gift amount	\$129
Raffle Proceeds (gross)	\$18,400
Donors	375
Average Gift Amount	\$49

saying that you have been well prepared and want current students to have the same educational advantage.

The families, students, faculty and staff of Seton-La Salle are grateful

to all donors listed in this report. Your generous gifts have made a real difference for families who might otherwise not be able to afford to give their children an SLS education.

Restricted donations—those earmarked for specific projects—are not included here, but play an important role as well. They have been used to upgrade the library,

fund-raising event and last year raised \$105,000 with about 400 people in attendance.

Gifts from alumni and the larger community are an expression of confidence in the mission and heritage of Seton-La Salle. With your gift, to SLS you are

improve student learning tools and increase safety and security for students.

If every alumni and friend of SLS made the decision of “how much to give” instead of “if I should give,” we could ensure the highest quality education for all. While the amount raised this year is up somewhat, and, overall, the number of participants has grown, we wonder hopefully what could be accomplished if just ten percent of the alumni gave; or dare to imagine the possibilities if 20 percent decided to make SLS a giving priority.

Your gift has lasting impact. As the only Catholic high school primarily serving Pittsburgh's South Hills area, SLS is an important regional, cultural and economic asset. Our young scholars, hardworking athletes and thoughtful service club volunteers will ultimately become your fellow alumni and contributing members of our society. SLS

continues to teach sound Catholic values in a safe, nurturing environment—delivering the same excellent education opportunities for more than 50 years. Your support is vital to our future.

Every effort has been made to ensure the accuracy of this report, but if an omission or mistake has been made, please call Amy Ganser, 412-561-3583 x 136.

2006-07 Annual Fund Who Gave?

Statistics are for all gifts to the Annual Fund through the Annual Appeal, the 999 Raffle, and fund-raising events.

Class of 1962: highest # of donors	25
ESHS	2
SHC	23
Class of 1966: greatest # of gifts	38
ESHS	10
SHC	28
Class of 1981: highest total given	\$13,916
Class of 1978: highest percent of participation	9.91%
<small>21 donors (4 ESHS/17 SHC) out of 212 alumni.</small>	

2006-07 Seton-La Salle Catholic High School Advisory Board

Kevin Boland

James Caprio

Jonathan Cuniak '98

Anthony DeFilippo '69

Linda S. Drago

Rev. David Driesch

Rex Gatto

Gus Gillespie '64

Mark Joseph '81

Rev. Thomas Kredel

Joseph Luvara '66

chairperson

Mary McIntyre '70

Patrick McGonigle

Angela Palmer '56

Rocco Panucci '81

Mary-Theresa Popa '81

Doreen Smyth '75

Tom Tomczyk, Sr. '66

Brian Walters '88

G. Alan Yeasted



The Seton-La Salle Catholic High School community is grateful to all the Advisory Board members who have served the school since its inception. Your role has been vital to the success of the school through its many changes, transitions and improvements over the years. As we begin to work within a new structure (see article at right), we acknowledge your contributions, pray for your continued success, and ask for your sustained involvement with SLS.

SLS legal structure undergoes changes

In April, the Diocese of Pittsburgh announced a restructuring of its diocesan high schools, including Seton-La Salle. The change takes effect Sept. 1, 2007. In an article by Robert Lockwood for the *Pittsburgh Catholic*, (5/14/2007) "High schools to be aided through incorporation," Father Lawrence DiNardo, the diocesan vicar for canonical services, explains, "Until now, the diocesan schools have been operating under the direct fiscal and administrative control of the Diocese of Pittsburgh. In September, the schools will be incorporated as individual Pennsylvania non-profit corporations. They will no longer be legal entities owned and operated by the Diocese of Pittsburgh."

The changes will require each of the high schools to have an elected board of directors made up of seven to 15 members. Currently, SLS is working to create this new board with the help of the former advisory board, the diocese support staff and other involved community members.

Father Kris Stubna, diocesan secretary for education, stressed that the legal changes would encourage more people to get involved in the work of building Catholic education, particularly in areas of marketing, funding, development and enrollment.

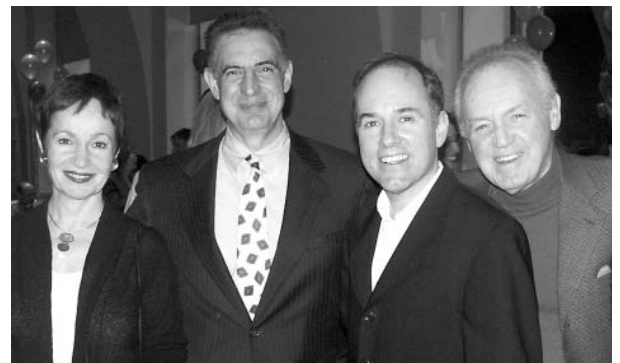
"This is a good development for our schools," Father Stubna concluded. "The changes in structure are being made to strengthen the overall operation of our schools and make for a solid future for generations to come."

Support this newsletter...

On May 14, 2007, the postal service implemented significant price increases for its services, including costs associated with sending periodicals such as the SLS Review. Currently, this newsletter costs the school about \$15,000 annually to print and send to your home. We know many of you read and value this newsletter, as can be attested by the growing number of contributors to the "Class Notes" section. To help us sustain this publication, we ask for your help. Your \$10 donation as a **SLS Review subscriber** will help us continue to deliver this informative and fun publication to your home for years to come. Please see the envelope that came with this newsletter and make your contribution today.

New musical and reception a hit

On Saturday, April 21, 2007 more than 100 friends, faculty and alumni of Seton-La Salle gathered at the Pittsburgh Public Theater for a 'glorious evening' with **Stephen Flaherty '78** and his creative partner Lynn Ahrens. The group celebrated Stephen's success of the world premier of his latest musical, "The Glorious Ones," during its preview week. The SLS Advisory Board sponsored the event, raising money for the Annual Fund and providing a wonderful venue for SLS alumni and friends to gather. If you have an idea for sponsoring a fundraising event, call Marilyn Walsh at 412-561-3583 x 119.



Lynn Ahrens, Joseph L. Luvara '66, Stephen Flaherty '78, and Joe Negri at the reception for "The Glorious Ones."

Building on our tradition of excellence

2006-2007 Seton-La Salle High School Annual Fund Donors

Founders' Circle (\$5,000+)

W/M Gus '64 and Susie Gillespie
Kate M. Kelley Foundation
Mr. Nick Merrick '81

In Fide et Caritate Circle (\$2,500-\$4,999)

Mr. Keith Karako '72
Mr. Anthony Massaro '62
Mr. Michael McCarthy '85
W/M Brian K. Murray '86
Dr/Dr Michael and Donna Tranovich

Principal's Circle (\$1,000-\$2,499)

Mr. Thomas Duffy '85
Mr. William Hough '68
Mr. Lawrence G. Hufnagel '76
Mr. Mark Joseph '81
W/M Stephen &
Mary Ann (Whalen) Litz '67
Ms. Debra (Tague) McCarthy '72
Mr. Matthew Merrick '85
Mr. Thomas Ryan '76
W/M Frank '74 and Luann Spindler
Dr. Philip M. Wildenhain '77

Green & Gold Circle (\$500-999)

Anonymous
Arlington Industries in
memory of Gail Kennedy*
W/M Alan and Charlene Augenstein
in memory of Gail Kennedy*
Mr. Edward Carey*
in memory of Gail Kennedy*
Mr. Thomas Cartwright '68
in memory of Mary Cartwright*
Christian Brothers - Baltimore Province
Mr. Richard D'Alessandro '66
Mr. John Friel '71
Mr. John C. Gargani '82
Dr. Rex Gatto '66
Mr. Joe Gery '74
Mr. James Haeck '64

in memory of Tom DeBasi '64,
William Laffey '64 and John Boris '64
Mr. James C. Hayes '65
Mr. Brian Henciak '93
Mr. James Hodos '64
Dr. Joseph K. Hofmeister '85
Mr. Earl "Casey" Kelly '63
Mr. John V. Konyk '69
W/M Joe '66 and Toni Luvara
in honor of Bro. James Butler and
Bro. Patrick Power, Jubilarians
Mr. Robert McGrail '63
Mr. James O'Rourke '74
Mr. Ed Ryan '71
Mr. Charles Saltzer '66
Mr. Raymond J. Sero '62
Mr. William Stout '64
W/M Thomas S. Tomczyk '66
Mr. Patrick E. Walsh '75
W/M David L. Wohleber '61

SLS Sentinel Club (\$250 - \$499)

Anonymous
Anonymous
Mr. Jack Brandl '71
in memory of Zachary Magnotta '03
W/M Dan and Peggy Carney
Mr. William F. Caye, II '86
in honor of William & Eva Caye
Class of '76 Reunion
Mr. Thomas E. Eyles '65
Mr. J. Michael Flanagan '69
Mr. William R. Friedman '62
Mr. John Gannon '60
Mr. Gus Griffin '62
Mr. Thomas J. Hughes '73
W/M Thomas '66 and Janice Kennedy in
memory of Ray and Gail Kennedy*
W/M Michael '90 and Amy Kuntz
in memory of Robert DelBianco '87
Mr. Michael Lucas '73
Mrs. Mary (Bassani) McIntyre '70
W/M Michael '79 and Beth Mulhern

continued on next page

* denotes current & former faculty

† denotes gift earmarked for restricted fund

CONTINUED ON NEXT PAGE

2007-08 Annual Fund for Tuition Assistance

Seton-La Salle values your participation and friendship. In appreciation, we hope you will accept the benefits of giving at the various levels:

Founders' Circle (\$5,000+)

- Recognition as a Founders' Circle contributor in the Founders' Dinner & Awards program

- Two complimentary invitations to the Founders Dinner (biennial)
- Two complimentary invitations to the annual dinner auction
- One Green & Gold Card*

In Fide et Caritate Circle (\$2,500+)

- Two complimentary invitations to the Founders Dinner (biennial)
- Two complimentary invitations to the annual Dinner Auction
- One Green & Gold Card*

Principal's Circle (\$1,000+)

- Two complimentary invitations to the Dinner Auction
- One Green & Gold Card

Green & Gold Circle (\$500+)

- One Green & Gold Card*

SLS Sentinel Club (\$250+)

Friends of SLS Club (\$100+)

Rebel Pride Club (to \$99)

SLS Review Subscriber \$10

- All Club level gifts of \$10+ receive an SLS window decal
- All alumni and friends receive the SLS Review.

* The gift Green & Gold Card is not valid as the student required purchase for participation in sports activities.

Please use the enclosed envelope to make your donation or pledge to become a member of the Annual Fund Donor Circle at any level.



Matching Gift Companies

The following businesses and the alumni and friends who work with them are an important asset to SLS. In fiscal year 2006-07, matching gifts provided an additional \$7,260 to the Fund for Tuition Assistance. If your employer offers a matching gift program, please take advantage of this opportunity to double your gift to SLS.

- Bank of America
- Chevron Texaco Corporation
- Eaton
- Glaxo Smith Kline
- Intel
- Mellon Bank
- Merck Company Foundation
- Morgan Stanley Dean Witter
- National City
- PPG Industries Foundation
- T. Rowe Price Associates Fdn, Inc.
- Teledyne Technologies, Inc.
- Washington Mutual
- Wells Fargo Foundation

Memorial Gifts

Sadly this year, two former SLS staff members, **Mary Cartwright** and **Gail Kennedy**, passed away. Their contributions over the years to the SLS community were reiterated by those who knew them. **Don Altmyer '73** remembered, "About 40 of us would be loudly pounding one key at a time with **Mary Cartwright** happily strolling the room singing 'Hands on the home keys, ready...J, J, semi, space.'"

According to a former colleague, "**Gail Kennedy** valued education immensely and reinforced that belief every day in her work at SHC."

Through gifts from friends and family to the Annual Fund, their memory lives on and supports a cause that was dear to their hearts.

SLS Sentinel Club (\$250+) continued

- M/M Patrick Mulhern '85
in memory of David Freedy '85
- Ms. Katie O'Toole '91
in memory of Kenneth Buka*
- Dr. J. "Bimbo" Pietro '70
- Dr. Mindy (Niedzielka) Rittner '87
- Dr. Virginia (Spadafore) Sanders '66
- Mr. Frederick Thieman '69
- Mr. Conan Tuite '68
- Dr. & Mrs. Gary and Donna Vallano
- Mr. Robert A. Vitale '78
- Dr. Philip Walsh '62

Friends of SLS Club
(\$100 - \$249)

- Anonymous
- Anonymous
- Anonymous
- Anonymous
- Dr. Rocco Adams '71
- Mr. Donald Altmyer '73
in memory of Kenneth Buka*
- Mr. John M. Arzenti '81
- Mr. Joseph Barry '76
- Mr. Lou Biscardo '62
- Mr. Edward J. Blieszner '73
- Mrs. Kristi (Caughy) Bonacci '95
- Mrs. Jennifer (Butler) Bordone '91
- M/M Richard Borofski
- M/M William '66 and Barbara Boyle
- Dr. Michael Brendel '77
- Dr. Thomas Campbell '75
- Ms. Tracy Cannon '00
- Mr. Thomas Carberry '68
- Mr. Thomas Caslin '62
- Mr. Randy Castriota '68
- Mr. Anthony J. Colega '72
- Mrs. Jean (Ferry) Comber '58
- Dr. Paul Comber '79
- M/M Donald Cronauer
- Mr. Jon Cuniak '98
- Mr. Michael Cunningham
- Mr. John Cvetic '78
- Mr. Richard Dabecco '71
- Mr. George Debski '82
- Mr. Richard A. DesMarais '63
- Mr. Frank A. DiPerna '76
- Mrs. Louise (Glatz) Eklund '64
- Elizabeth Seton Class of 1966
Employees of UPMC
in memory of Gail Kennedy*
- Equipment & Controls Inc
in memory of Gail Kennedy*
- Mr. Christopher Farrell '66
- M/M Mark and Stacy (Kelly) Feczko '87
- M/M Steve and Nancy Fischetti
- Mr. D. Michael Fisher '62

- Mr. Stephen Flaherty '78
- Ms. Jeannie French '79
- Mr. J. Raymond Gallivan '66
- Col.(Ret) Carol A. Ganser '55
- Mr. Carl Garrubba '82
- Mr. Robert Gergerich '78
- Mr. Brian Geyer '00
- M/M Gus '64 and Susie Gillespie
in memory of Leo T. Walsh
- Ms. Carrie Gillespie '03
- Mr. Timothy Girdis '76
- Mrs. Mary Lou (Brown) Glaid '47
- Mr. Glenn Graner '75
- Ms. Susan Guttendorf '84
- Mr. Kevin Hayes '78 in memory of Gail Kennedy*
- Mr. John Helbling '63
- Mr. Francis Hensler '60
in memory of Michael Hensler '61
- Mr. Mark L. Hogan '73
- Mrs. Mary Helen (Goetz) Hutchins '71
- Mr. Tom Irr '62
- Mr. Garrett Isacco '62
- Dr. Carissa (Pitchok) Katz '86
- Mr. Ryan Kelly '03
- Mr. John T. Kennedy '69
- Mrs. Kathy (Litz) Kotas '64
- Reverend Thomas Kredel
- Dr. James Krugh '62
- Mr. William Kuenzig '67
- Mr. William Kunzman '65
- Mrs. Sandra (Ruhling) LaHouse '63
- Mr. Gregory Lantz '80
- Mr. Brian J. Linhart '63
in memory of Arthur Linhart '61
- Mr. Thomas Livingston '75
- The Lloyd Family (Matthew '86, Martin '93,
Meighan '94, Mary Frances '00)
in memory of Anna Marie Catanzaro '53
- Mrs. Darlene (Rokicki) Luzar '91
- M/M Richard and Dianne Lynch
- Mr. George Mader, Jr. '79
- Mr. Daniel A. Maker '64
- Mr. John Markovich '61
- M/M Tom Markovich '60
- Mr. Douglas B. Marvin '65
in honor of the SLS faculty
- Mr. William T. Maseiko '78
- Mr. H. Scott Matthews '88
- Reverend Malcolm McDonald '77
- Mr. Joseph McKenna
in memory of Daniel McKenna '83
- Mr. Francis R. McKinley, Jr. '60
- Ms. Suzanne C. McNally
- Mr. Rick Metzger '91
- Mr. Alfred Michenzi '61
- M/M Charles Modispacher '60
- Mr. Peter Morasca '64
- M/M M. Dean Mosites
in memory of Gail Kennedy*
- Mr. Matthew Mullaney '86
- Mr. Derek J. Nolan '87
- Mr. Joseph G. Nychay '74

Building on our tradition of excellence

Friends of SLS Club (\$100+) continued

Dr. Paul Ohm '61
 M/M Joseph and Mary Olesky
 in memory of Daniel & Dorothy Mertzlufft
 Mr. Drew Ondik '76
 Ms. Jennifer Ondik '83
 Mr. Paul K. Ott '75
 Mr. Richard J. Palamara '71
 Mr. Marc Panucci '90
 M/M Rocco and Maria (Eastland) Panucci '81
 M/M Daniel J. Perry
 Lt. Andrew Pistella '75
 Mrs. Mary Theresa (DePasquale) Popa '81
 Mrs. Loni (Nevins) Pottieger '84
 Mrs. Lorena J. (Furlong) Purvis, Ret AF Lt Col '54
 Mr. Charles Quiter '62
 Mr. John C. Ramirez '82
 Mr. John Rech, Jr. '63
 Mr. Bob Reed '60
 Mr. Jack Regan '64
 in memory of Richard Lacey '64
 M/M Andrew and Elizabeth (Piaggese) Rieland '98
 Mr. John Riordan, Jr. '67
 in memory of Jan Smetana '67
 M/M Dino Rizza
 M/M Renald '64 and Donna '65 (Sylvester) Rossa
 Mr. Richard Smith Rozman '73
 Mr. Michael Ryan '82
 Mr. Joseph Sadowski
 Mr. Chris Salvadori '85
 in memory of Craig Salvadori '86
 Mr. Peter T. Schepis '80
 Dr. Peter J. Silvester, Jr. '64
 Mrs. Kathleen Slampak in memory of Gino
 Mr. Ray Smetana '60
 Ms. Doreen Smyth '75
 Mr. David Stetzer '61 in honor of Martin '60,
 David '61, Dale '63 and Jay '65 Stetzer
 M/M Bill & Pat Strazza in memory of
 James Palmer* and Kenneth Buka*
 Mr. Patrick Sullivan '67
 Target Stores
 Mr. Jude Torchia '76
 Mr. Tom Tuchnowski '83
 Mr. Charles Twardy '73
 in memory of Charles and Alyce Twardy†
 Mr. William P. Wallace '72
 Mrs. Patricia (Lang) Watso '58
 M/M Timothy Webb '74
 Mr. John S. Wodarek '61
 Mr. Robert Q. Yeckley '70
 in memory of Richard Yeckley '72†
 Mr. Aldo Zini '71

Rebel Pride Club (to \$99)

Anonymous
 Anonymous in memory of Sr. Mildred McClain*
 Mrs. Kristen (Reutzel) Aguto '84
 in memory of Mary Reutzel
 Mr. James Aiello '61
 M/M Daniel Ali '68

Mr. Paul Alter '65
 Mr. William Barry '60
 Mr. William Bergell '79
 Bethel Park Federation of Teachers
 in memory of Gail Kennedy*
 Bethel Park High School Guidance Dept
 in memory of Gail Kennedy*
 Mr. James Birmingham '67
 Mrs. Lois (Neus) Bozzo '46
 Mrs. Coleen (Fallon) Brennen '85
 Mrs. Lucy Bruce* in memory of Mary Cartwright*
 Ms. Abigail Buffington '05
 Mr. Christopher Buffington '03
 Ms. Ann F. Burgunder '65
 Mr. Joseph Butler '67
 Mr. Denis Calabria '72
 Mr. Richard Caruso '78
 Mr. Tony Caruso '91
 Mrs. Sally (Michener) Churley '89
 M/M Bill and Mary Jane Collins
 in memory of Edward Stack
 Mr. Daniel Connell '99
 Mrs. Patricia (Parrish) Costello '57
 Ms. Margaret M. Cronin '70
 in memory of Daniel Cronin '72
 Mrs. Marilyn (Wadas) Curro '66
 Mr. Charles Cusick '67
 Mr. Bob Daley '68
 Ms. Nancy (Glottzbach) Degenhardt '86
 Mr. Piero DelVecchio
 in memory of Karen DelVecchio
 Mr. Jeffrey Dissen '79
 Mr. Gregory Dorsey '60
 in memory of Thomas A. Bird '60
 Mr. Billy Dunn '64
 Mrs. Sue (Radley) Ellsworth '73
 in memory of Gail Kennedy*
 Mr. Bill Fagan '75
 Ms. Clare Ann Fitzgerald '86
 in honor of Robert J. Fitzgerald, Sr.
 Mr. Bill Flaherty '77
 Sister Rosemary Fleming '53
 Mr. John Friel '71 in memory of Gail Kennedy*
 Brother Timothy Froehlich '74
 Mrs. Gail (Gray) Funaro '51
 in memory of Sr. Marie de Sales*
 M/M Dennis and Marilyn Funtal
 in honor of Amy (Funtal) White '94
 Ms. Amy Ganser '90
 Mr. Thomas Garrity '74
 M/M Robert and Mirra '85 (Fantin) Gavran
 Mr. Robert Gind '68
 M/M Henry Giovannelli '69
 Mr. Paul Golebie '81 in memory of Bro. Robert Wise*
 Mr. Michael Gorski '70
 Mrs. Theresa (Hungerman) Grimm '81
 in honor of Mary T. Popa '81
 M/M Daniel and Anita Hillebrecht
 Mr. Tom Hipkiss '84
 Mrs. Rosemary (Weet) Hoey '52
 M/M Blaise Hollot
 Mrs. Marianne (Kieda) Hudzik '66
 in honor of Jamie Hudzik '01
 Ms. Jamie B. Hudzik '01
 Mr. James Hunkele '65
 Mr. Rich Kaczmarek '67
 Mr. David Kasievich '94
 in memory of Sr. Ildefonse Goss*

Giving Opportunities at Seton-La Salle High School

- **Give to the Annual Appeal**
- **Enroll for SOS Tax Credits**
 Many PA businesses are eligible to gain tax credits and give to SLS.
- **Take part in the 999 Raffle**
 the annual raffle has good odds and supports a great cause.
- **Buy a Memorial Wall Tile**
 An engraved tile is a great way to honor and remember loved ones.
- **Get involved in events**
 Join a committee or attend:
 - The Annual Dinner/Auction
 - The Rebel Golf Classic
 - Comedy Night and others
- **Establish or contribute to a Scholarship Fund**
- **Give a gift of stocks/bonds**
- **Make a charitable bequest**

Mr. Robert Kelly '62
 Mr. James J. Klatt '62
 Mr. Norman Klatt '64
 Mrs. Kathy (Maurer) Koltas '86
 M/M Kevin & Pam Kuhn in memory of Gail Kennedy*
 M/M John '66 and Linda Kulzer
 Ms. Roseann (Salamon) Ladedda '65
 in memory of Rose Salamon
 Mr. Scott Larkin '66 in memory of Gail Kennedy*
 Mrs. Susan (Klinker) Lauffer '71
 Mr. Brian W. Lease '79
 Mr. Carmen A. Lebdar '60
 Ms. Amber Lerach '00
 M/M Kevin and Christina Lippert
 Mr. Gerard S. Lucarelli, Jr. '83
 Ms. Lisa Lucas
 Mr. Joseph Lux '75
 Ms. Mary Ann Lynch in memory of Gail Kennedy*
 Mr. Merle Maffei '62
 Mr. Matthew Marshall '87
 Mrs. Rosemary (Tarzia) Mastrangelo '80
 Mr. Paul Matthew '61
 Mr. Edward F. Maziarz '62
 Mr. John McCurdy '62
 LtC.(Ret) Charles P. McDowell '62
 Mr. Daniel J. McGervey '83
 Mr. James S. McKeen, Jr. '60
 Mr. Bill McMahan '64
 Mr. Alexander Mericli '01
 Mr. Benjamin Mericli '04
 M/M Henry and JoAnn Metting
 Mr. John Meyer '86 in memory of Robert Meyer
 Mr. Chris Michener '81
 David, Jacqueline and Ian Molinaro-Thompson

continued on next page
 * denotes current & former faculty
 † denotes gift earmarked for restricted fund
 CONTINUED ON NEXT PAGE

Rebel Pride Club (to \$99)

in memory of Gail Kennedy*
M/M Mike and Beth (Faber) Murdy '84
Ms. Mary O. Murphy '83
Mr. Tom Murphy '62
Mrs. Ellen (Carl) Murray '49
Mr. Patrick Murtagh '00
Dr. William Naughton '61
Mr. Robert A. Nedzesky, PE '69
Mr. Keith Norbutt '90
Mr. David A. Nugent '72
Ms. Lisa (Stefanyak) O'Brien '87
Mr. C.T. O'Donnell '70 in honor of Sr. Patricia Laffey*
M/M Charles and Anne Pascoe
in memory of Gail Kennedy*
Mr. Frank Paul, Jr. '62
The Eric Peters Family '88
Ms. Laure G. Petro '84
in honor of Elizabeth Dobrosielski '09
Mrs. Mildred Pfeifer in memory of James L. Palmer*
Col. James Poland '64
M/M Drew '83 and Tanya Potts
Mrs. Judith M. (Bauman) Prezioso '63
Mr. Joseph M. Ramirez '79
Mr. Bryan J. Randall, Sr. '74
Mr. James Rebel '63
Mr. Michael Roarty in memory of Gail Kennedy*
Mr. Perry Rofey in memory of Gail Kennedy*
M/M Paul '83 and Susan Rossman
M/M Tom and Kathleen '53 (Dolan) Ryan
Ms. Rose Marie Sacco '56
Mr. Gregory Scanlon '68
Mr. James Scanlon '73
Mr. James Schmitz '63
M/M Michael and Mary '78 (Morreale) Serafini
in memory of Kathleen DeVecchio
Ms. Marilyn (Hoffman) Sheck '64
Mrs. Amy (Niedzielka) Shipley '87
The Dale Shriver and Glenn Daniels Families
in memory of Gail Kennedy
Ms. Mary Kathleen (Vaglia) Skalka '57
M/M Matthew '89 and Robin Skindzier
Mr. William P. Smith '71 in memory of the
deceased members of the Smith Family
M/M Richard Soeder in memory of Gail Kennedy*
Mr. David Stabile '66 in honor of Charlotte Stabile
and in memory of Joseph Stabile
Mrs. Irene (Noel) Stein '52
Mrs. Mary (Feuer) Stewart '64
in memory of Gail Kennedy*
Mr. John Stockhausen in memory of Gail Kennedy*
Mr. Joseph W. Stubenbort '74
Mr. Robert M. Sucky '83
Ms. Elaine (Bandi) Sullivan '63
Mr. Edward Sullivan '78
Mr. Kenneth Surdick '67
M/M Mark Susco
Mr. J. Carter Tackett in memory of Gail Kennedy*
Mr. Corey Teitz '05
Ms. Cynthia (Dapper) Vensak '79
Ms. Norma Very in memory of Douglas Very '85
Mr. Ed Villella '70
Mr. Edward Vith '67
Mr. Dave Wagner '74
Mr. David Weinheimer '60
Mrs. Rita (Egler) Weir '67
Ms. Claudia (Wojszynski) Woods '66
Mrs. Eileen (Moczulski) Wuenstel '75
Ms. Linda (Farrell) Ziccardi '66

Seton-La Salle Catholic High School

2006-2007 EITC Program Participants

Thank you to alumni and friends who are business owners and participate in the Educational Improvement Tax Credit Program (EITC). Through EITC, these individuals and organizations have made considerable donations to Seton-La Salle. The Diocese of Pittsburgh's Scholastic Opportunities Scholarship fund is the primary scholarship fund, but others such as the Bridge Foundation are also serving as scholarship entities. This year, SLS students received more than \$175,000 in tuition assistance scholarships through this program. Please support these important friends of Seton-La Salle.

Brookside Lumber & Supply
CSX Corporation
Heartland Homes
H.P. Starr Lumber
Premier Safety & Service

Rex Glass & Mirror Company
Shanahan Transportation systems
Specialty Bar Products Company
Waste Management

If you are a business owner in the Commonwealth of Pennsylvania, the taxes you pay could be transformed into a sizable donation to Seton-La Salle High School and turn your taxes into tax credits. For more information call 412-561-3583 x 119.

Nominations accepted for Hall of Fame

An Advisory Committee composed of Seton-La Salle, South Hills Catholic, and Elizabeth Seton alumni biennially inducts members into the Hall of Fame and names the John T. Cicco Lifetime Achievement Award recipients. Individuals are selected from nominations solicited from alumni, faculty, and friends. All graduates of at least 10 years, all present and former faculty, and distinguished friends of the school are eligible. The next induction will be in the Fall, 2008. If you know someone who has demonstrated excellence in academic pursuits, career achievements and in their church and community service, visit our website at www.sls.org/Development/nomination.html or call 412-561-3583 x 119.

PAST RECIPIENTS OF THE SLS HALL OF FAME AWARD

1991	Col. Carol Ganser, USAFNC '55	Sr. Marlene Mondalek '59
John T. Cicco*†	Sr. Mary Agnes Schildkamp**†	
Thomas A. Bird '60†	Frederick W. Thieman '69	2002
Anna Marie Catanzaro '53†	Ensign James C. Wonn '62	Dr. Alan & Mrs. Yeasted*
D. Michael Fisher '62		Thomas A. Dattilo '66
Stephen C. Flaherty '78	1996	Richard J. Lacey '64†
Donald A. Gmitter '63	Brother David Baginski '64	Sr. Ellenita O'Connor, S.C. '45
Edward M. Ryan '64†	James L. Palmer**†	Harry Pitchok '62
Herbert H. South '65	Jane Jehovics Klose-Tucker '62	
William Strazza**	Suzanne McConnell-Serio '84	2004
James J. Sweeney '80		Father Joseph Lonergan*†
1992	1998	Peg (Harvey) Bennett '45†
James L. Murdy*	Gerard Conboy**	Gus Gillespie '64
Maria Alsatti	Stephen F. Litz '67	Edwin P. Shiner**†
David J. Dattilo, DDS '69	Dianne Page McKenna '61	Jack Mascaro '62
Thomas K. Donahoe '65	Nicholas A. Merrick '81	Frank W. Zych**†
Brother Alexis Kirk, FSC**†	Ted A. White**	
Marion Puerzer, MD '59	2000	2006
1994	James L. Palmer*†	Kay Dieckmann*
Bernard J. Powers*	Lucy Bruce**	Kathy McConnell-Miller '85
	Kenneth Buka**†	William J. McGregor '67
	Robert G. DelGreco, Jr. '72	Anthony O'Toole**†
		Sr. Kathryn Palas, SC**†

*Denotes John T. Cicco Award

**Denotes faculty

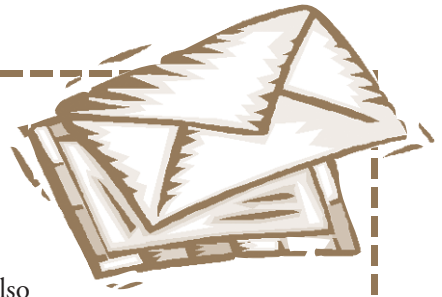
† Denotes deceased

Additional Gifts that Benefit the Students and Mission of SLS

It is obvious from this list of donors that it takes a community to raise a child. Thank you to the many individuals and businesses listed here for contributing to the school through participation in the Rebel Golf Outing, through the purchase of Memorial Wall Tiles, by attending the Dinner Auction or the Alumni Celebration, or giving to various programs.

A-Automotive, Inc. Mr. Steve Abbondanza '70	Ms. Loretta Carr M/M Timothy Caskey	Mr. Alexander Ellsworth Ms. Mary Ann Engel	Mr. Paul Jamison M/M Paul Jankowiak	M/M Gary Matson Mattress Factory	M/M Richard Osterwise M/M Daniel O'Toole	Mr. C. Russell Rock '68 M/M Gary Rodgers	The Kid Company The Meadows
A-Boss Opticians, Inc. Acme Clay Products, Inc. M/M Chris Adams '95	Mrs. Jane Cass '75 Dr. Peter Castelli II '67	Ms. Carol Erzen '76 Evanovich Landscaping	Mrs. Jarunan Jaruthien Jezebel-Station Square	M/M Dennis Matuszak M/M L. Matuszewski	Our Lady of Grace Parish Our Lady of Loreto	Roland's Seafood Grill Mr. Vincent Rooney '65	Dr./Mrs. W. Thomeier, Sr. T-N-D of Pittsburgh
Mr. Jack Adams S.A. Adams Mr. Shawn Ahearn Mr. Terry Ahearn	M/M Frank Chickis Mrs. Paulette Cerminara	Mr. John Fahry Ms. Carrie Farmerie '95	John McGinnis & Co. Ms. Mary Joseph	M/M Pasquale Mazzocca Mr. Michael McCarey '67	Outback Steakhouse Mr. Robert Pack	Ms. Michael Rubino Ms. Mary Russo	Mrs. Nina Tommarello '75 Mr. Randy Toomey
Mr. Shaun Ahearn All About Walls Mr. Shaun Altman '97	Certified Fast Play M/M Dale Chasky	Ms. Linda Fazio '66 Mr. Edward Feeny '77	Ms. Jostens Mr. Daniel Kail '63	Mr. Eric McCarthy M/M Thomas McCarthy	Mr. Paul Palmer Ms. Michele Pahnke	Sister Anne Rutledge Ryco Plumbing	Trax Farm Marion Tsipsis
Mr. Terry Ahearn Mrs. Sharon Chebatoris '77	M/M Frank Chickis Mr. Robert Church '71	Ms. Patricia Firouzan '76 Mr. Bob Fisher	Mr. Ralph Kaiser Mr. Patrick Kalnas '81	Mr. Frank McClelland M/M James McClelland	M/M Carmine Paliotta Ms. Anna Palko	Ms. Joy Ann Rzeznick S & T Bank	Mr. Jerrad Tuite '78 Ms. Angel Turner
Mrs. Mary Ann Aluise '82 Amel's Mrs. Linda Andrews '73	Ms. Alexis Cianfione City Theatre	Mr. James Feeny '82 Mr. Patricia Firouzan '76	Mr. Andrew Karl Mr. Brian Karl	Ms. K. McConnell-Miller '85 Ms. Patti McCoy	Mrs. Angela Palmer '56 Mr. Paul Palmer	Saint Francis University Saint Vincent College	Twisted Ballon Enter. M/M John Ubinger
Andy Warhol Museum M/M Ernest Antoniazzi	Mrs. Leslie Clark Mrs. Patricia Cole '74	Mr. Robert Fisher Mr. Joseph Flaherty '88	M/M Walter Karloski M/M Ray Kavalir	Ms. Mary McDonald '66 Mr. Pat McGonigle, Jr. '98	Mrs. Jennifer Panian '90 M/M Ronald Papale	Ms. Mary Salamon '67 Mrs. Christie Salimbene	Univ. of Pgh Repertory Mr. Doug Wagner '80
Argentine Productions Mrs. Joan Atkinson	M/M John Coll Mr. Robert Colleran '83	Mr. Herb Flercher Mr. Richard Francis	Ms. Bridget Kelly M/M Gary Kelly	Mr. Edward McGrath Mrs. Jane McGuire '83	Ms. Dominick Parker '75 Ms. R. Parmigiani '64	Salon Christianna Saloon of Mr. Lebanon	Mr. James Usher '88 Ms. Pamela Vanselow '02
M/M Roy Augenstein Mr. Joseph Auth '61	Mr. Mark Colussy Mr. Robert Colwell '73	Ms. Melissa Franko Mr. Robert Friday	M/M John Kelly Mrs. Roberta Kelly '65	M/Kenna & Associates Dr. Melissa McLane '87	M/M Stephen Parowski Party Cake Bakery	Ms. Beth Sapienza Mr. Josh Schmidmeier '97	Dr./Mrs. Stephen Vargo, Jr. Mr. Michael Vaughan '79
Ms. Chris Balint Banksville Exp. Printing	Ms. Joann Conwell Cookies By Design	Mr. Timothy Friedberg '64 Friends of St. Valentine	M/M Jenny Kemp '60 M/M Dennis Kennedy '70	Mr. Michael McMahon Mr. George McMillin '75	M/M Harry Patterson Mr. Michael Pauline	Sister Mary Schrei SC '55 Mrs. Kathleen Scotti '81	Mr. Rocco Violi '74 Mr. Richard Viscomi '64
Mrs. Lorraine Barnes '61 M/M Charles Barth	M/M William Cordisco, Jr. Mr. Henry Cortese '76	Mrs. Cathy Frischkorn Mrs. June Ganser '62	M/M Lawrence Kenny Dr. Owen Kilbane, DDS	Mr. C. McNally '78 Mr. Jim McQuillen	Dr. W. Pendergast '82 M/M Gary Perella	Ms. Bernice Votas '67 Mr. Bob Wagner	Ms. Bernice Votas '67 Mr. Bob Wagner
Mr. Don Baumgart Mr. Frank Baumgarten	Costco Wholesale Mr. Mark Craib	Mr. John Gasper Mr. Gregory Gattuso '80	Mrs. Christine King Ms. Donna Klepiss	The Medicine Shoppe Mr. Dennis Mehring '69	Ms. Mallory Perella 2007 Ms. Patricia Perrett '76	Ms. Chelsa Wagner '95 Mr. Doug Wagner	Ms. Chelsa Wagner '95 Mr. Doug Wagner
BeautiControl Skin & Spa Ms. Lynne Beck	Dr. Thomas Crain, Jr. '72 Mrs. Sheryl Cramer	Ms. Mary Therese Geraci Getaway Cafe	Mr. Bernard Klisavage '71 Mr. Brian Klisavage '83	Ms. Stella Meridil Dr. Judith Merrick	Ms. Rose Perri Mr. Greg Perry	Seton Hill University Ms. Lorraine Shadle	Mr. Greg Wagner M/M Jack Wagner
Mrs. Kathleen Beckovich Sue Ellsworth '73	Mr. Keith Creehan '80 Mr. Stephen Critchlow '68	Mr. John Gasper Mr. Emil Giampa	Mr. Ronald Koerner Ms. Jacqueline Konesky	Metz & Associates Ltd. Mr. Albert Meyer '70	Phipps Conservatory Piccolina's	Mr. Louis Wagner, Jr. Wahl Heating & Cooling	Mr. Greg Wagner M/M Jack Wagner
Bellisario's Pizza Mr. M. Belsterling '06	Mrs. Redsy Croke Mr. Sean Crowell '86	Ms. M. Gielarowski '80 M/M David Gifford	Mr. Jeffrey Krantz M/M Richard Kraski, Sr.	Ms. Bev Mianzo Mitchell's Fish Market	Ms. Andrea Shawley Shear Talent	Wahl Heating & Cooling M/M Rich Wall	Mr. Greg Wagner M/M Jack Wagner
Dr. Ralph Belsterling '75 Bethel Bakery	Mr. Daniel Cusick '66 Mr. Craig D'Aloiso	M/M David Gifford Mr. Marty Gillespie	Reverend Thomas Kredel Kriebel's Bakery	Dr. Judith Merrick Metz & Associates Ltd.	Ms. Alice Sheets '67 M/M John Sigg	Mr. Michael Wallace '75 Mr. William Wallace '72	Mr. Louis Wagner, Jr. Wahl Heating & Cooling
Dr. Anthony Betz '64 Mr. Paul Bianculli	Mr. Jack Dandra Mr. Frank T. Danyo '65	M/M Marty Gillespie Mrs. Mary Gillis '84	Mrs. Dana Monzo '92 MoonLite Cafe	Mr. Albert Meyer '70 Ms. Bev Mianzo	M/M Tom Shanahan Ms. Jaclyn Shannon '97	Wallace Shoppe M/M John Walluk	Wahl Heating & Cooling M/M Rich Wall
Mr. Darrell Bichler '73 M/M Ralph Bilski	Mr. Daniel Darragh '64 Dr. Anthony DeCaria	Ms. Mary Ann Ging '72 Mr. Terrence Ging '84	Terry Kubica Mr. Tom Kubica	Mitchell's Fish Market Mr. James Modrak	Ms. Andrea Shawley Shear Talent	Wallace Shoppe M/M John Walluk	Wahl Heating & Cooling M/M Rich Wall
Mrs. Mary Black '76 Mr. Shaun Blackham	Mr. Tony DeFilippo '69 M/M William Delach	Ms. Mary Ann Ging '72 Mr. Terrence Ging '84	Ms. Laura Kubicki '85 Mr. Thomas Kublack	MoonLite Cafe More for Your Dollar	Ms. Alice Sheets '67 M/M John Sigg	Wallace Shoppe M/M John Walluk	Wahl Heating & Cooling M/M Rich Wall
Mrs. Nancy Blaskiewicz '67 Mr. William Blawel '66	Mr. William Delach DeLallo's Restaurant	Ms. Mary Ann Ging '72 Mr. Terrence Ging '84	Mr. William Lacey '62 Mr. Ed Laffey	More for Your Dollar More Than Words	M/M Tom Shanahan Ms. Jaclyn Shannon '97	Wallace Shoppe M/M John Walluk	Wahl Heating & Cooling M/M Rich Wall
Mr. Bill Bluemel Mr. Brad Bogdanski	Mrs. Catherine DeGreco Mr. Wayne DeLuca '62	Ms. Mary Ann Ging '72 Mr. Terrence Ging '84	Sr. Patricia Laffey SC '60 Mr. T. Lamb, Jr. '76	More Than Words Ms. Mary Morgan	Ms. Andrea Shawley Shear Talent	Wallace Shoppe M/M John Walluk	Wahl Heating & Cooling M/M Rich Wall
M/M Paul Bojarski M/M Kevin Boland	Denim Heaven Ms. Marlene Denk	Ms. Mary Ann Ging '72 Mr. Terrence Ging '84	Mr. T. Lamb, Jr. '76 Mrs. Sheila Lang '47	Ms. Mary Morgan Mr. David Moritz	Ms. Andrea Shawley Shear Talent	Wallace Shoppe M/M John Walluk	Wahl Heating & Cooling M/M Rich Wall
Mr. William Bonini '81 M/M Thaddeus Boron	Mr. Dom DePasquale '84 Mr. Fred DePasquale '87	Ms. Mary Ann Ging '72 Mr. Terrence Ging '84	LaPiana Chiropractic LaRoche College	Mr. David Moritz Mr. John Moroney '75	Ms. Andrea Shawley Shear Talent	Wallace Shoppe M/M John Walluk	Wahl Heating & Cooling M/M Rich Wall
Sr. Barbara Boss SC '60 Dr. Ronald Boves	M/M Carl DeRiggi Mr. Andrew DeRose	Ms. Mary Ann Ging '72 Mr. Terrence Ging '84	Mr. Patrick Gnazzo '64 Ms. Caitlin Goodwin '04	Mr. Charles Morreale '74 Dr. Mark Morrissey '75	Ms. Andrea Shawley Shear Talent	Wallace Shoppe M/M John Walluk	Wahl Heating & Cooling M/M Rich Wall
Brace Flooring, L.P. The Breadworks	Mr. Matthew Devine '00 M/M Alan Dick '66	Ms. Mary Ann Ging '72 Mr. Terrence Ging '84	Mr. Bob Gordon Ms. Valeria Gorman	Dr. Mark Morrissey '75 Mouse Call Computer	Ms. Andrea Shawley Shear Talent	Wallace Shoppe M/M John Walluk	Wahl Heating & Cooling M/M Rich Wall
Brookside Lumber Mr. Bill Browne	Dickie, McCamey & Chilcote Didi's Designs	Ms. Mary Ann Ging '72 Mr. Terrence Ging '84	Mr. Bruce Gradkowski '01 Graphics 22 Signs	Mr. Bill Mrazek Mt. Aloysius College	Ms. Andrea Shawley Shear Talent	Wallace Shoppe M/M John Walluk	Wahl Heating & Cooling M/M Rich Wall
Bruschetta's Restaurant M/M Jeffrey Brust '75	M/M Herman Dieckmann Mr. Donald DiLucente	Ms. Mary Ann Ging '72 Mr. Terrence Ging '84	Mr. Bruce Gradkowski '01 Graphics 22 Signs	Mt. Aloysius College Mt. Lebanon Floral	Ms. Andrea Shawley Shear Talent	Wallace Shoppe M/M John Walluk	Wahl Heating & Cooling M/M Rich Wall
M/M Ralph Bucci '69 Mrs. Rossana Bucci	Mr. Tom DiPasquale '82 Mr. Edward Dixon '70	Ms. Mary Ann Ging '72 Mr. Terrence Ging '84	Mr. Patrick Gnazzo '64 Ms. Caitlin Goodwin '04	Mr. Lebanon Floral Mt. Lebanon Floral	Ms. Andrea Shawley Shear Talent	Wallace Shoppe M/M John Walluk	Wahl Heating & Cooling M/M Rich Wall
Bucci Jewelers M/M John Buffington	Ms. Mary Dobrosielski '04 Mr. Stephen Dobrosielski	Ms. Mary Ann Ging '72 Mr. Terrence Ging '84	Mr. Bob Gordon Ms. Valeria Gorman	Mt. Lebanon Floral Mt. Lebanon Floral	Ms. Andrea Shawley Shear Talent	Wallace Shoppe M/M John Walluk	Wahl Heating & Cooling M/M Rich Wall
Mr. T. Burgunder '69 Mr. Bill Burgunder, Jr. '69	Ms. Kathleen Donahoe '61 Mr. Tom Donahoe '65	Ms. Mary Ann Ging '72 Mr. Terrence Ging '84	Mr. Bruce Gradkowski '01 Graphics 22 Signs	Mt. Lebanon Floral Mt. Lebanon Floral	Ms. Andrea Shawley Shear Talent	Wallace Shoppe M/M John Walluk	Wahl Heating & Cooling M/M Rich Wall
Mr. William Burgunder Mr. Jeffrey Buskirk '77	Rev. Philip Donatelli Mr. Ed Donley	Ms. Mary Ann Ging '72 Mr. Terrence Ging '84	Mr. Bruce Gradkowski '01 Graphics 22 Signs	Mt. Lebanon Floral Mt. Lebanon Floral	Ms. Andrea Shawley Shear Talent	Wallace Shoppe M/M John Walluk	Wahl Heating & Cooling M/M Rich Wall
Buzzy Baskyring C.T. Miller Vineyards	Mr. Mark Donley Ms. Ruth Donley '46	Ms. Mary Ann Ging '72 Mr. Terrence Ging '84	Mr. Bruce Gradkowski '01 Graphics 22 Signs	Mt. Lebanon Floral Mt. Lebanon Floral	Ms. Andrea Shawley Shear Talent	Wallace Shoppe M/M John Walluk	Wahl Heating & Cooling M/M Rich Wall
CA, Inc. Cafe Georgio	M/M Thomas Donley Ms. Susan Dott	Ms. Mary Ann Ging '72 Mr. Terrence Ging '84	Mr. Bruce Gradkowski '01 Graphics 22 Signs	Mt. Lebanon Floral Mt. Lebanon Floral	Ms. Andrea Shawley Shear Talent	Wallace Shoppe M/M John Walluk	Wahl Heating & Cooling M/M Rich Wall
Mr. Anthony Calabria '98 Mrs. Dee Calabria	Ms. Linda Drago M/M James Droney, Jr.	Ms. Mary Ann Ging '72 Mr. Terrence Ging '84	Mr. Bruce Gradkowski '01 Graphics 22 Signs	Mt. Lebanon Floral Mt. Lebanon Floral	Ms. Andrea Shawley Shear Talent	Wallace Shoppe M/M John Walluk	Wahl Heating & Cooling M/M Rich Wall
Mr. Michael Calabria '90 Calabria's Restaurant	Mrs. Sally Ducouer '76 M/M Richard Dudiak	Ms. Mary Ann Ging '72 Mr. Terrence Ging '84	Mr. Bruce Gradkowski '01 Graphics 22 Signs	Mt. Lebanon Floral Mt. Lebanon Floral	Ms. Andrea Shawley Shear Talent	Wallace Shoppe M/M John Walluk	Wahl Heating & Cooling M/M Rich Wall
Mr. John Cambest '66 Mr. Venard Campbell '76	M/M Patrick Duffy M/M Timothy Dunlap	Ms. Mary Ann Ging '72 Mr. Terrence Ging '84	Mr. Bruce Gradkowski '01 Graphics 22 Signs	Mt. Lebanon Floral Mt. Lebanon Floral	Ms. Andrea Shawley Shear Talent	Wallace Shoppe M/M John Walluk	Wahl Heating & Cooling M/M Rich Wall
Mr. Joel Caplan M/M James Caprio	Ms. Marcia Dunn Duquesne University	Ms. Mary Ann Ging '72 Mr. Terrence Ging '84	Mr. Bruce Gradkowski '01 Graphics 22 Signs	Mt. Lebanon Floral Mt. Lebanon Floral	Ms. Andrea Shawley Shear Talent	Wallace Shoppe M/M John Walluk	Wahl Heating & Cooling M/M Rich Wall
Cardello Electric Carlow University	Eat'n Park Hosp. Group Rev. Mark Eckman '77	Ms. Mary Ann Ging '72 Mr. Terrence Ging '84	Mr. Bruce Gradkowski '01 Graphics 22 Signs	Mt. Lebanon Floral Mt. Lebanon Floral	Ms. Andrea Shawley Shear Talent	Wallace Shoppe M/M John Walluk	Wahl Heating & Cooling M/M Rich Wall
CMU School of Drama Carnegie Museums	Edgewood Country Club Mr. Louis Eichert	Ms. Mary Ann Ging '72 Mr. Terrence Ging '84	Mr. Bruce Gradkowski '01 Graphics 22 Signs	Mt. Lebanon Floral Mt. Lebanon Floral	Ms. Andrea Shawley Shear Talent	Wallace Shoppe M/M John Walluk	Wahl Heating & Cooling M/M Rich Wall
Carnegie Science Center	Ms. Gail Elliott	Ms. Mary Ann Ging '72 Mr. Terrence Ging '84	Mr. Bruce Gradkowski '01 Graphics 22 Signs	Mt. Lebanon Floral Mt. Lebanon Floral	Ms. Andrea Shawley Shear Talent	Wallace Shoppe M/M John Walluk	Wahl Heating & Cooling M/M Rich Wall
		Ms. Mary Ann Ging '72 Mr. Terrence Ging '84	Mr. Bruce Gradkowski '01 Graphics 22 Signs	Mt. Lebanon Floral Mt. Lebanon Floral	Ms. Andrea Shawley Shear Talent	Wallace Shoppe M/M John Walluk	Wahl Heating & Cooling M/M Rich Wall
		Ms. Mary Ann Ging '72 Mr. Terrence Ging '84	Mr. Bruce Gradkowski '01 Graphics 22 Signs	Mt. Lebanon Floral Mt. Lebanon Floral	Ms. Andrea Shawley Shear Talent	Wallace Shoppe M/M John Walluk	Wahl Heating & Cooling M/M Rich Wall
		Ms. Mary Ann Ging '72 Mr. Terrence Ging '84	Mr. Bruce Gradkowski '01 Graphics 22 Signs	Mt. Lebanon Floral Mt. Lebanon Floral	Ms. Andrea Shawley Shear Talent	Wallace Shoppe M/M John Walluk	Wahl Heating & Cooling M/M Rich Wall
		Ms. Mary Ann Ging '72 Mr. Terrence Ging '84	Mr. Bruce Gradkowski '01 Graphics 22 Signs	Mt. Lebanon Floral Mt. Lebanon Floral	Ms. Andrea Shawley Shear Talent	Wallace Shoppe M/M John Walluk	Wahl Heating & Cooling M/M Rich Wall
		Ms. Mary Ann Ging '72 Mr. Terrence Ging '84	Mr. Bruce Gradkowski '01 Graphics 22 Signs	Mt. Lebanon Floral Mt. Lebanon Floral	Ms. Andrea Shawley Shear Talent	Wallace Shoppe M/M John Walluk	Wahl Heating & Cooling M/M Rich Wall
		Ms. Mary Ann Ging '72 Mr. Terrence Ging '84	Mr. Bruce Gradkowski '01 Graphics 22 Signs	Mt. Lebanon Floral Mt. Lebanon Floral	Ms. Andrea Shawley Shear Talent	Wallace Shoppe M/M John Walluk	Wahl Heating & Cooling M/M Rich Wall
		Ms. Mary Ann Ging '72 Mr. Terrence Ging '84	Mr. Bruce Gradkowski '01 Graphics 22 Signs	Mt. Lebanon Floral Mt. Lebanon Floral	Ms. Andrea Shawley Shear Talent	Wallace Shoppe M/M John Walluk	Wahl Heating & Cooling M/M Rich Wall
		Ms. Mary Ann Ging '72 Mr. Terrence Ging '84	Mr. Bruce Gradkowski '01 Graphics 22 Signs	Mt. Lebanon Floral Mt. Lebanon Floral	Ms. Andrea Shawley Shear Talent	Wallace Shoppe M/M John Walluk	Wahl Heating & Cooling M/M Rich Wall
		Ms. Mary Ann Ging '72 Mr. Terrence Ging '84	Mr. Bruce Gradkowski '01 Graphics 22 Signs	Mt. Lebanon Floral Mt. Lebanon Floral	Ms. Andrea Shawley Shear Talent	Wallace Shoppe M/M John Walluk	Wahl Heating & Cooling M/M Rich Wall
		Ms. Mary Ann Ging '72 Mr. Terrence Ging '84	Mr. Bruce Gradkowski '01 Graphics 22 Signs	Mt. Lebanon Floral Mt. Lebanon Floral	Ms. Andrea Shawley Shear Talent	Wallace Shoppe M/M John Walluk	Wahl Heating & Cooling M/M Rich Wall
		Ms. Mary Ann Ging '72 Mr. Terrence Ging '84	Mr. Bruce Gradkowski '01 Graphics 22 Signs	Mt. Lebanon Floral Mt. Lebanon Floral	Ms. Andrea Shawley Shear Talent	Wallace Shoppe M/M John Walluk	Wahl Heating & Cooling M/M Rich Wall
		Ms. Mary Ann Ging '72 Mr. Terrence Ging '84	Mr. Bruce Gradkowski '01 Graphics 22 Signs	Mt. Lebanon Floral Mt. Lebanon Floral	Ms. Andrea Shawley Shear Talent	Wallace Shoppe M/M John Walluk	Wahl Heating & Cooling M/M Rich Wall
		Ms. Mary Ann Ging '72 Mr. Terrence Ging '84	Mr. Bruce Gradkowski '01 Graphics 22 Signs	Mt. Lebanon Floral Mt. Lebanon Floral	Ms. Andrea Shawley Shear Talent	Wallace Shoppe M/M John Walluk	Wahl Heating & Cooling M/M Rich Wall
		Ms. Mary Ann Ging '72 Mr. Terrence Ging '84	Mr. Bruce Gradkowski '01 Graphics 22 Signs	Mt. Lebanon Floral Mt. Lebanon Floral	Ms. Andrea Shawley Shear Talent	Wallace Shoppe M/M John Walluk	Wahl Heating & Cooling M/M Rich Wall
		Ms. Mary Ann Ging '72 Mr. Terrence Ging '84	Mr. Bruce Gradkowski '01 Graphics 22 Signs	Mt. Lebanon Floral Mt. Lebanon Floral	Ms. Andrea Shawley Shear Talent	Wallace Shoppe M/M John Walluk	Wahl Heating & Cooling M/M Rich Wall
		Ms. Mary Ann Ging '72 Mr. Terrence Ging '84	Mr. Bruce Gradkowski '01 Graphics 22 Signs	Mt. Lebanon Floral Mt. Lebanon Floral	Ms. Andrea Shawley Shear Talent	Wallace Shoppe M/M John Walluk	Wahl Heating & Cooling M/M Rich Wall
		Ms. Mary Ann Ging '72 Mr. Terrence Ging '84	Mr. Bruce Gradkowski '01 Graphics 22 Signs	Mt. Lebanon Floral Mt. Lebanon Floral	Ms. Andrea Shawley Shear Talent	Wallace Shoppe M/M John Walluk	Wahl Heating & Cooling M/M Rich Wall
		Ms. Mary Ann Ging '72 Mr. Terrence Ging '84	Mr. Bruce Gradkowski '01 Graphics 22 Signs	Mt. Lebanon Floral Mt. Lebanon Floral	Ms. Andrea Shawley Shear Talent	Wallace Shoppe M/M John Walluk	Wahl Heating & Cooling M/M Rich Wall
		Ms. Mary Ann Ging '72 Mr. Terrence Ging '84	Mr. Bruce Gradkowski '01 Graphics 22 Signs	Mt. Lebanon Floral Mt. Lebanon Floral	Ms. Andrea Shawley Shear Talent	Wallace Shoppe M/M John Walluk	Wahl Heating & Cooling M/M Rich Wall
		Ms. Mary Ann Ging '72 Mr. Terrence Ging '84	Mr. Bruce Gradkowski '01 Graphics 22 Signs	Mt. Lebanon Floral Mt. Lebanon Floral	Ms. Andrea Shawley Shear Talent	Wallace Shoppe M/M John Walluk	Wahl Heating & Cooling M/M Rich Wall
		Ms. Mary Ann Ging '72 Mr. Terrence Ging '84	Mr. Bruce Gradkowski '01 Graphics 22 Signs	Mt. Lebanon Floral Mt. Lebanon Floral	Ms. Andrea Shawley Shear Talent	Wallace Shoppe M/M John Walluk	Wahl Heating & Cooling M/M Rich Wall
		Ms. Mary Ann Ging '72 Mr. Terrence Ging '84	Mr. Bruce Gradkowski '01 Graphics 22 Signs	Mt. Lebanon Floral Mt. Lebanon Floral	Ms. Andrea Shawley Shear Talent	Wallace Shoppe M/M John Walluk	Wahl Heating & Cooling M/M Rich Wall
		Ms. Mary Ann Ging '72 Mr. Terrence Ging '84	Mr. Bruce Gradkowski '01 Graphics 22 Signs	Mt. Lebanon Floral Mt. Lebanon Floral	Ms. Andrea Shawley Shear Talent	Wallace Shoppe M/M John Walluk	Wahl Heating & Cooling M/M Rich Wall
		Ms. Mary Ann Ging '72 Mr. Terrence Ging '84	Mr. Bruce Gradkowski '01 Graphics 22 Signs	Mt. Lebanon Floral Mt. Lebanon Floral	Ms. Andrea Shawley Shear Talent	Wallace Shoppe M/M John Walluk	Wahl Heating & Cooling M/M Rich Wall
		Ms. Mary Ann Ging '72 Mr. Terrence Ging '84	Mr. Bruce Gradkowski '01 Graphics 22 Signs	Mt. Lebanon Floral Mt. Lebanon Floral	Ms. Andrea Shawley Shear Talent	Wallace Shoppe M/M John Walluk	Wahl Heating & Cooling M/M Rich Wall
		Ms. Mary Ann Ging '72 Mr. Terrence Ging '84	Mr. Bruce Gradkowski '01 Graphics 22 Signs	Mt. Lebanon Floral Mt. Lebanon Floral	Ms. Andrea Shawley Shear Talent	Wallace Shoppe M/M John Walluk	Wahl Heating & Cooling M/M Rich Wall
		Ms. Mary Ann Ging '72 Mr. Terrence Ging '84	Mr. Bruce Gradkowski '01 Graphics 22 Signs	Mt. Lebanon Floral Mt. Lebanon Floral	Ms. Andrea Shawley Shear Talent	Wallace Shoppe M/M John Walluk	Wahl Heating & Cooling M/M Rich Wall
		Ms. Mary Ann Ging '72 Mr. Terrence Ging '84	Mr. Bruce Gradkowski '01 Graphics 22 Signs	Mt. Lebanon Floral Mt. Lebanon Floral	Ms. Andrea Shawley Shear Talent	Wallace Shoppe M/M John Walluk	Wahl Heating & Cooling M/M Rich Wall
		Ms. Mary Ann Ging '72 Mr. Terrence Ging '84	Mr. Bruce Gradkowski '01 Graphics 22 Signs	Mt. Lebanon Floral Mt. Lebanon Floral	Ms. Andrea Shawley Shear Talent	Wallace Shoppe M/M John Walluk	Wahl Heating & Cooling M/M Rich Wall
		Ms. Mary Ann Ging '72 Mr. Terrence Ging '84	Mr. Bruce Gradkowski '01 Graphics 22 Signs	Mt. Lebanon Floral Mt. Lebanon Floral	Ms. Andrea Shawley Shear Talent	Wallace Shoppe M/M John Walluk	Wahl Heating & Cooling M/M Rich Wall
		Ms. Mary Ann Ging '72 Mr. Terrence Ging '84	Mr. Bruce Gradkowski '01 Graphics 22 Signs	Mt. Lebanon Floral Mt. Lebanon Floral	Ms. Andrea Shawley Shear Talent	Wallace Shoppe M/M John Walluk	Wahl Heating & Cooling M/M Rich Wall
		Ms. Mary Ann Ging '72 Mr. Terrence Ging '84	Mr. Bruce Gradkowski '01 Graphics 22 Signs	Mt. Lebanon Floral Mt. Lebanon Floral	Ms. Andrea Shawley Shear Talent	Wallace Shoppe M/M John Walluk	Wahl Heating & Cooling M/M Rich Wall
		Ms. Mary Ann Ging '72 Mr. Terrence Ging '84	Mr. Bruce Gradkowski '01 Graphics 22 Signs	Mt. Lebanon Floral Mt. Lebanon Floral	Ms. Andrea Shawley Shear Talent	Wallace Shoppe M/M John Walluk	Wahl Heating & Cooling M/M Rich Wall
		Ms. Mary Ann Ging '72 Mr. Terrence Ging '84	Mr. Bruce Gradkowski '01 Graphics 22 Signs	Mt. Lebanon Floral Mt. Lebanon Floral	Ms. Andrea Shawley Shear Talent	Wallace Shoppe M/M John Walluk	Wahl Heating & Cooling M/M Rich Wall
		Ms. Mary Ann Ging '72 Mr. Terrence Ging '84	Mr. Bruce Gradkowski '01 Graphics 22 Signs	Mt. Lebanon Floral Mt. Lebanon Floral	Ms. Andrea Shawley Shear Talent	Wallace Shoppe M/M John Walluk	Wahl Heating & Cooling M/M Rich Wall
		Ms. Mary Ann Ging '72 Mr. Terrence Ging '84	Mr. Bruce Gradkowski '01 Graphics 22 Signs	Mt. Lebanon Floral Mt. Lebanon Floral	Ms. Andrea Shawley Shear Talent	Wallace Shoppe M/M John Walluk	Wahl Heating & Cooling M/M Rich Wall
		Ms. Mary Ann Ging '72 Mr. Terrence Ging '84	Mr. Bruce Gradkowski '01 Graphics 22 Signs	Mt. Lebanon Floral Mt. Lebanon Floral	Ms. Andrea Shawley Shear Talent	Wallace Shoppe M/M John Walluk	Wahl Heating & Cooling M/M Rich Wall
		Ms. Mary Ann Ging '72 Mr. Terrence Ging '84	Mr. Bruce Gradkowski '01 Graphics 22 Signs	Mt. Lebanon Floral Mt. Lebanon Floral	Ms. Andrea Shawley Shear Talent	Wallace Shoppe M/M John Walluk	Wahl Heating & Cooling M/M Rich Wall
		Ms. Mary Ann Ging '72 Mr. Terrence Ging '84	Mr. Bruce Gradkowski '01 Graphics 22 Signs	Mt. Lebanon Floral Mt. Lebanon Floral	Ms. Andrea Shawley Shear Talent	Wallace Shoppe M/M John Walluk	Wahl Heating & Cooling M/M Rich Wall
		Ms. Mary Ann Ging '72 Mr. Terrence Ging '84	Mr. Bruce Gradkowski '01 Graphics 22 Signs	Mt. Lebanon Floral Mt. Lebanon Floral	Ms. Andrea Shawley Shear Talent	Wallace Shoppe M/M John Walluk	Wahl Heating & Cooling M/M Rich Wall
		Ms. Mary Ann Ging '72 Mr. Terrence Ging '84	Mr. Bruce Gradkowski '01 Graphics 22 Signs	Mt. Lebanon Floral Mt. Lebanon Floral	Ms. Andrea Shawley Shear Talent	Wallace Shoppe M/M John Walluk	Wahl Heating & Cooling M/M Rich Wall
		Ms. Mary Ann Ging '72 Mr. Terrence Ging '84	Mr. Bruce Gradkowski '01 Graphics 22 Signs	Mt. Lebanon Floral Mt. Lebanon Floral	Ms. Andrea Shawley Shear Talent	Wallace Shoppe M/M John Walluk	Wahl Heating & Cooling M/M Rich Wall
		Ms. Mary Ann Ging '72 Mr. Terrence Ging '84	Mr. Bruce Gradkowski '01 				

Class Notes



New job? Just moved? Earned a degree? Welcomed a new family member? Or just want to reconnect with friends? Please send your latest news or some of your SLS memories for our newsletter. Mail this completed form to Seton-La Salle Catholic High School, 1000 McNeilly Road, Pittsburgh, PA 15226-2593. Include photos, too! You can also visit the web site at www.slshs.org, click on the Development Office tab and complete the Class Notes form. Or e-mail walshm@slshs.org. (Include electronic images up to 1.5M with e-mail.)

Name _____ Maiden _____ Class of _____

Address _____

City _____ State _____ Zip _____

Phone (H) _____ (W) _____ E-mail _____

News about you or remembrances of SLS/ES/SHC: _____

Note to parents: If your son or daughter has moved from your home address, please update the alumni office at 412-561-3583 x 136 or complete the form above and mail as directed. Thank you.



Seton-La Salle High School
1000 McNeilly Road
Pittsburgh, PA 15226-2593
www.slshs.org
PH: 412-561-3583

ADDRESS SERVICE REQUESTED

NONPROFIT ORG.
US Postage
PAID
Pittsburgh, PA
Permit No. 2391

MISSION

Through dedicated instruction in the academic disciplines, faithful teaching of the gospel, active participation in worship, and the generous sharing of time and talent, Seton-La Salle High School seeks to nurture and incorporate into its very life the message revealed in Jesus Christ.